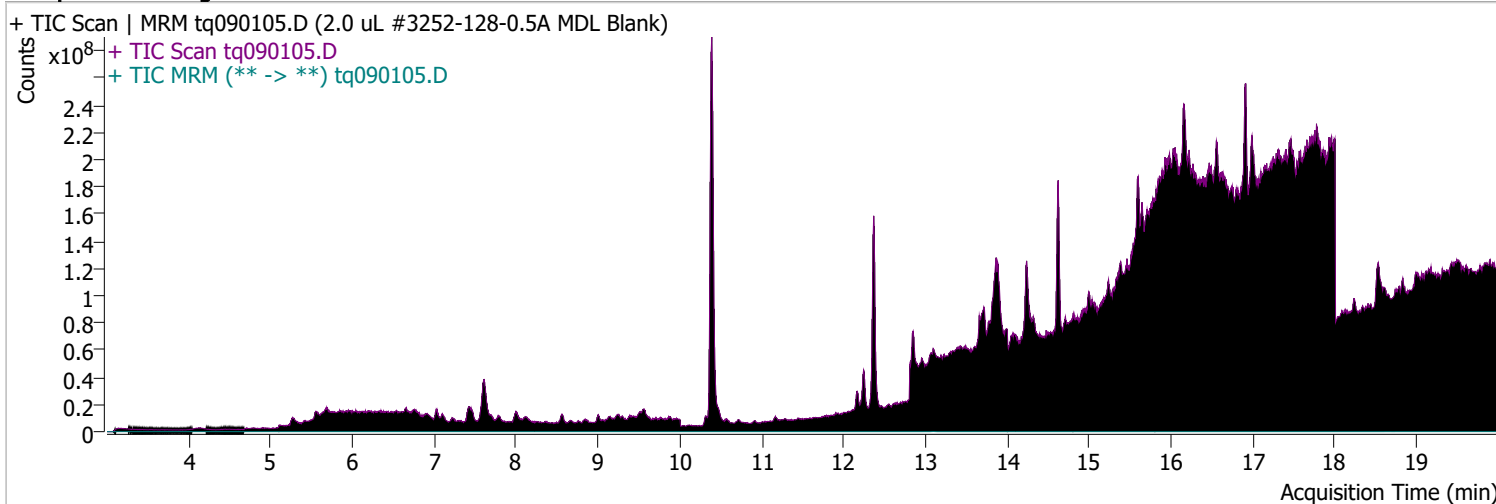


Quantitative Analysis Sample Report

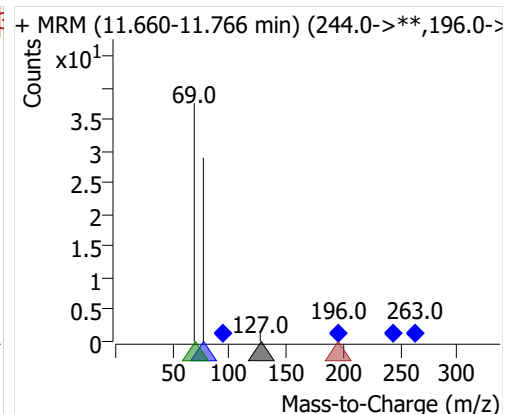
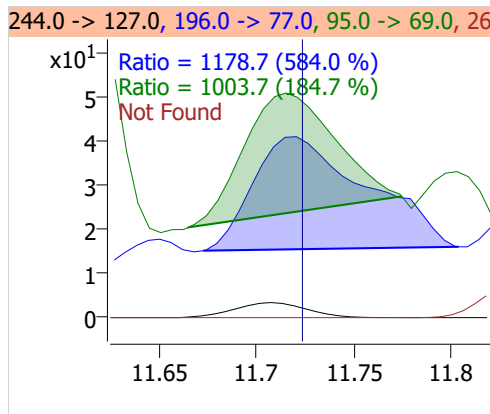
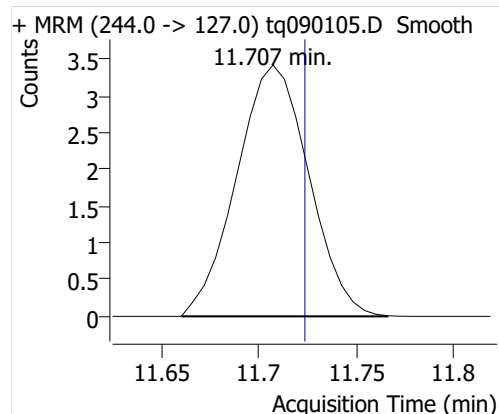
Batch Path	D:\MassHunter\GCMS\1\data\01sep22\QuantResults\mdlblk.batch.bin		
Analysis Time	9/22/2022 7:17 AM	Analyst Name	DESKTOP-R0LAL7E\analyst
Report Time	9/22/2022 7:24:08 AM	Reporter Name	DESKTOP-R0LAL7E\analyst
Last Calib Update	9/6/2022 9:10 AM	Batch State	Processed
Quant Batch Version	10.1	Quant Report Version	10.1
Acq. Time	9/1/2022 2:55 PM	Data File	tq090105.D
Sample Type	Sample	Sample Name	2.0 uL #3252-128-0.5A MDL Blank
Dilution	1	Acq. Method	tq22m0831

Sample Chromatogram

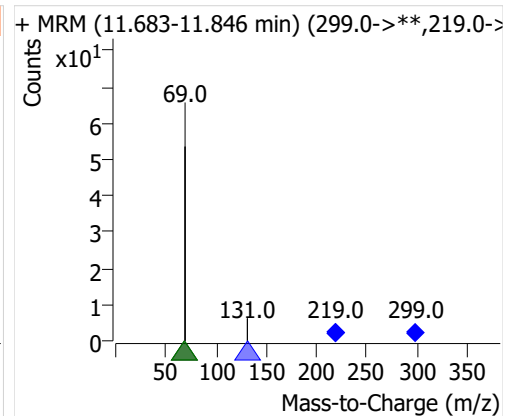
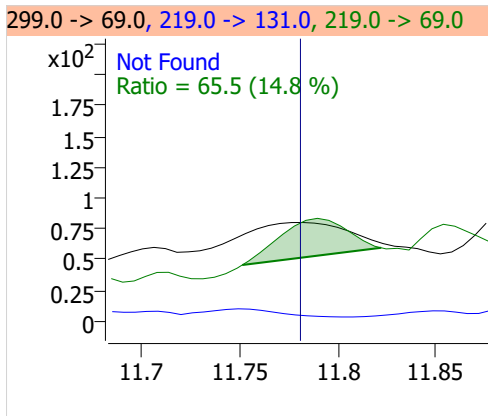
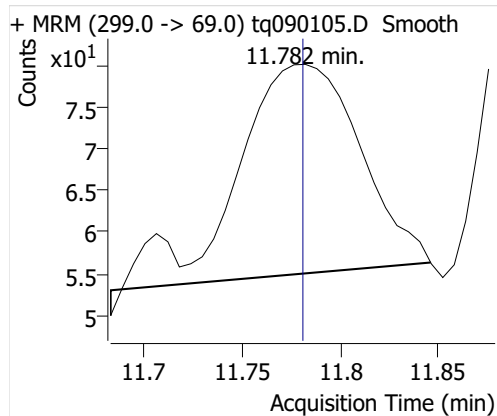


Compound	ISTD	RT	Resp.	ISTD Resp.	Resp. Ratio	Final Conc	Units
4:2 FTOH	6:2 FTOH-C13	11.707	9	25580	0.0003	0.0008	ng
5:2sFTOH	6:2 FTOH-C13	11.782	110	25580	0.0043	0.0244	ng
7:2sFTOH	6:2 FTOH-C13			25580		ND	ng
6:2 FTOH	6:2 FTOH-C13	13.129	500	25580	0.0196	0.0254	ng
8:2 FTOH-C13	6:2 FTOH-C13	14.330	7724	25580	0.3020	0.9772	ng
8:2 FTOH	6:2 FTOH-C13	14.325	46	25580	0.0018	0.0079	ng
10:2 FTOH	6:2 FTOH-C13			25580		ND	ng
12:2 FTOH	6:2 FTOH-C13	16.376	26	25580	0.0010	0.0035	ng

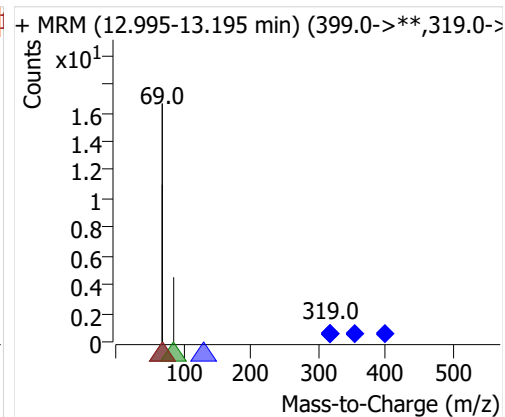
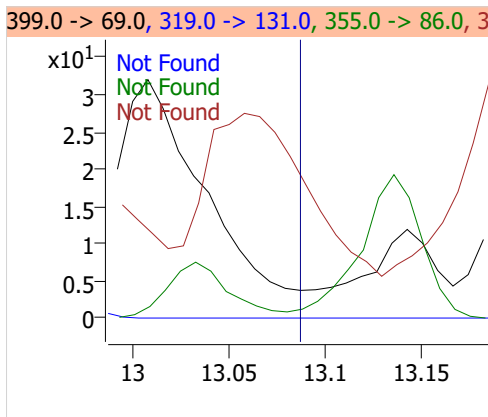
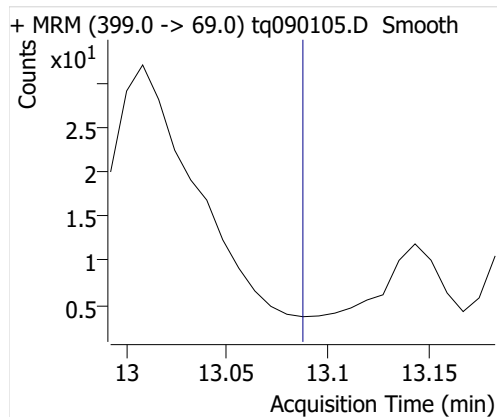
4:2 FTOH



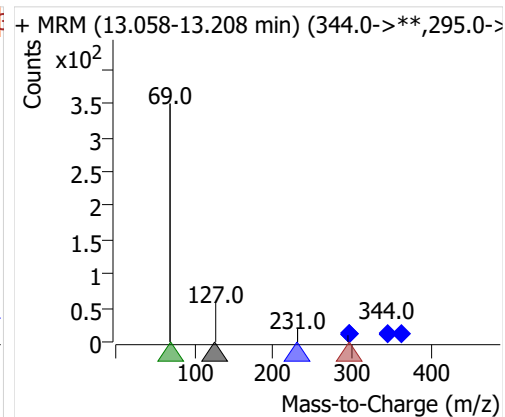
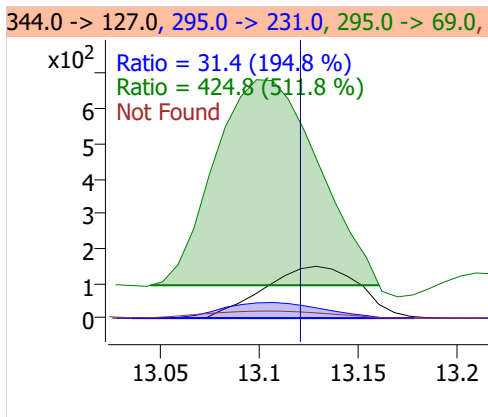
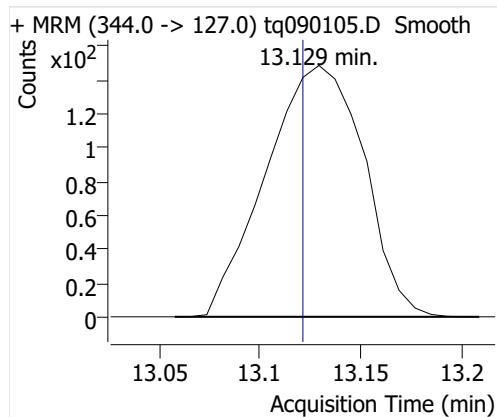
5:2sFTOH



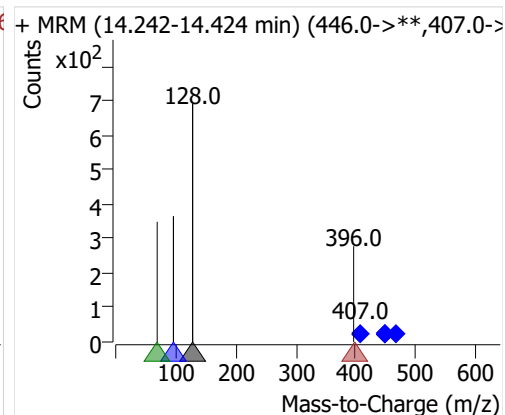
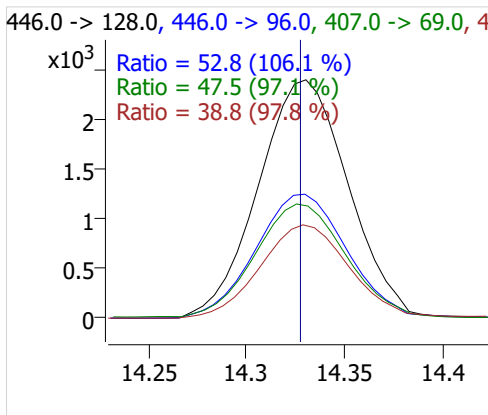
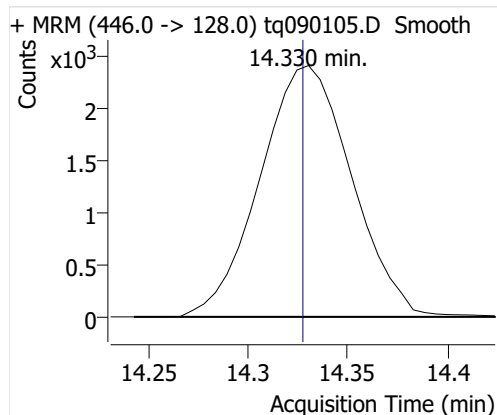
7:2sFTOH



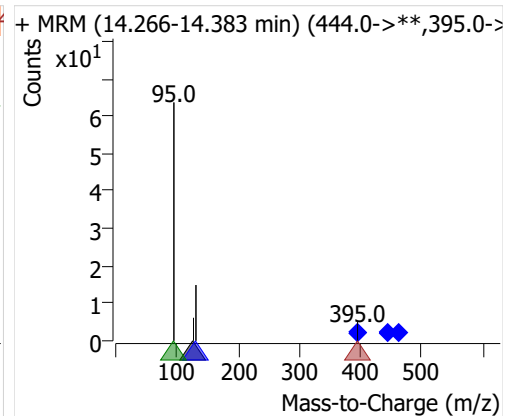
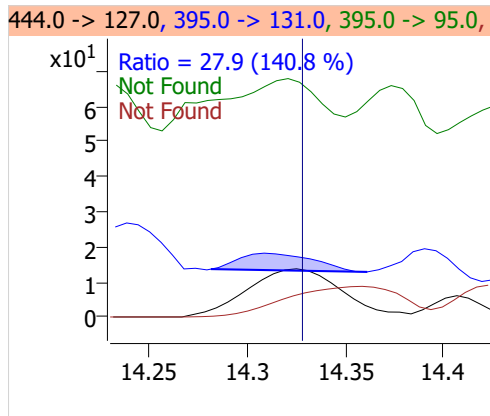
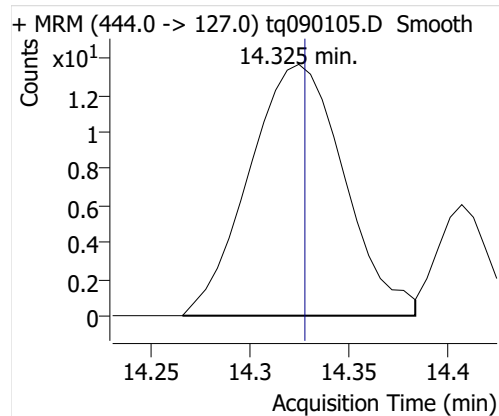
6:2 FTOH



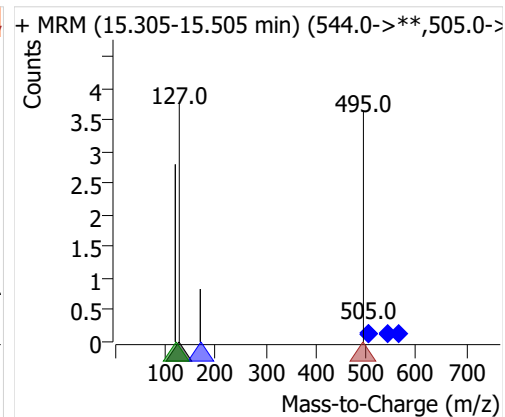
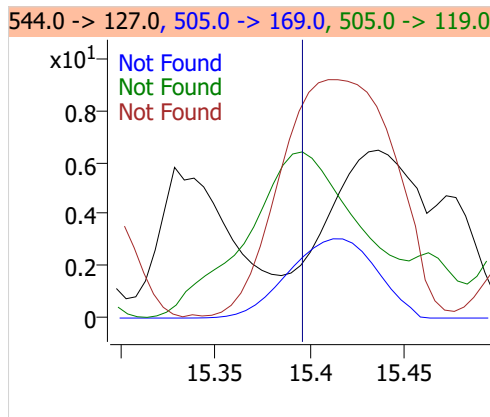
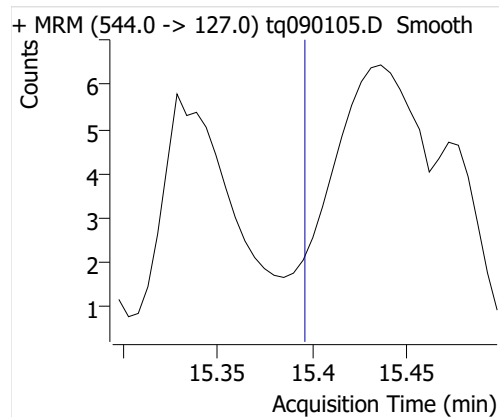
8:2 FTOH-C13



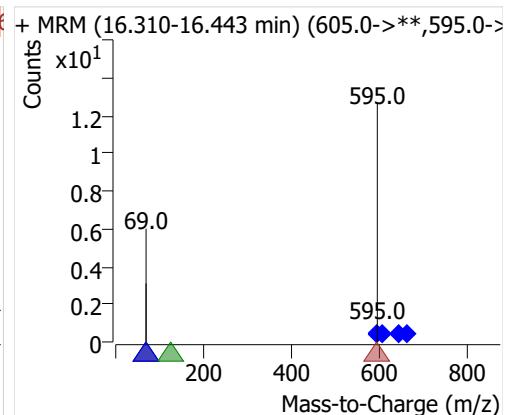
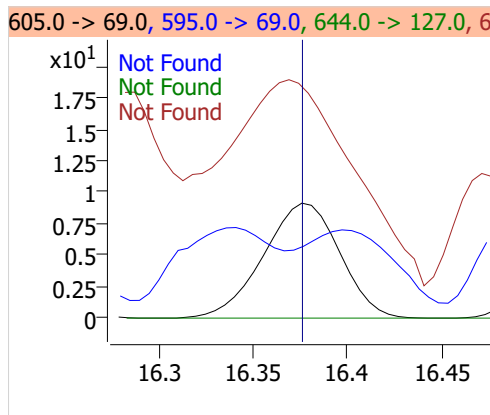
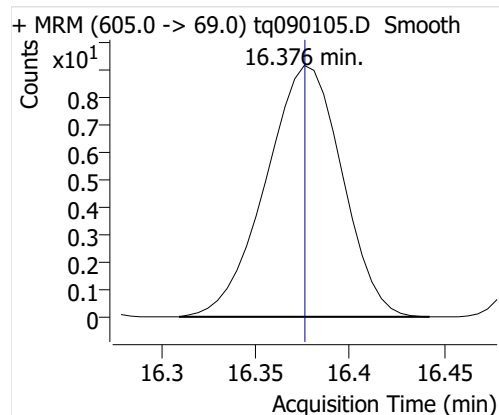
8:2 FTOH



10:2 FTOH



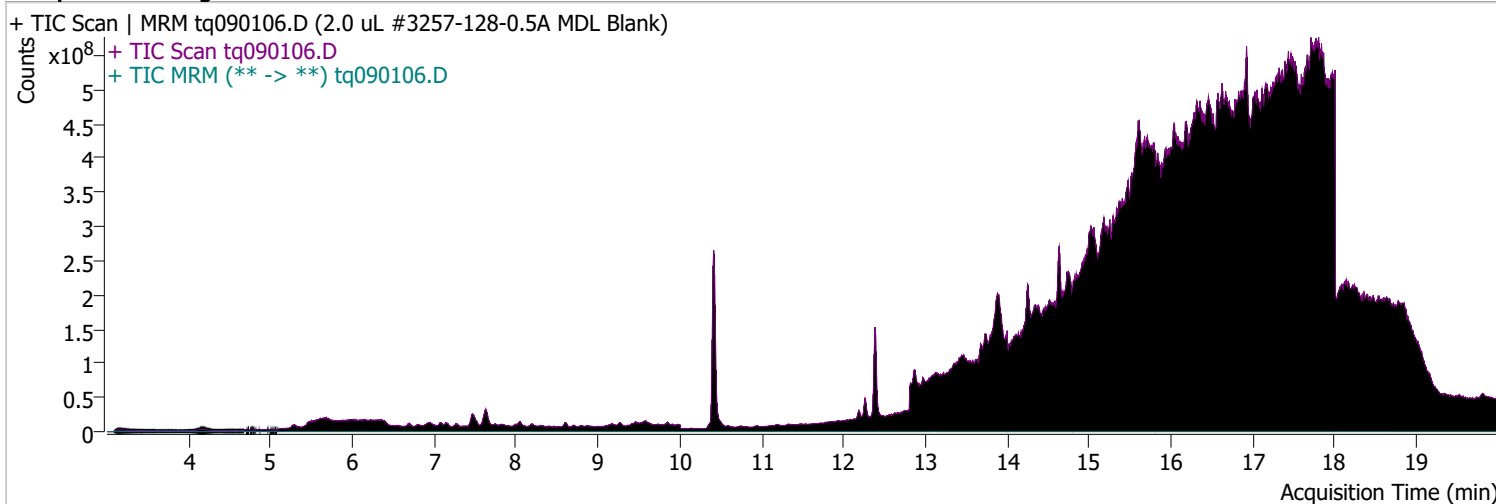
12:2 FTOH



Quantitative Analysis Sample Report

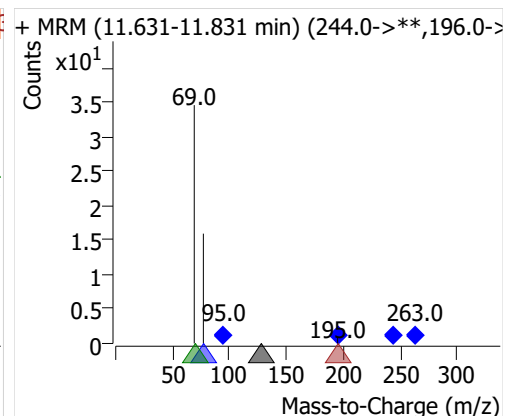
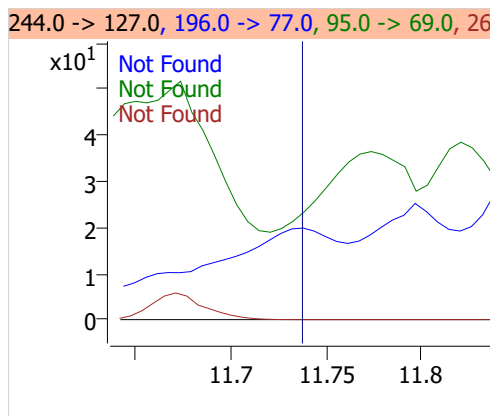
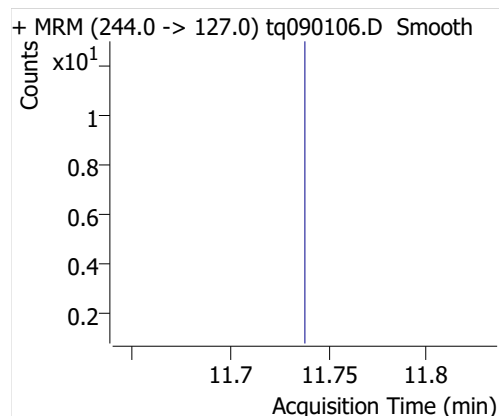
Batch Path	D:\MassHunter\GCMS\1\data\01sep22\QuantResults\mdlblk.batch.bin		
Analysis Time	9/22/2022 7:17 AM	Analyst Name	DESKTOP-R0LAL7E\analyst
Report Time	9/22/2022 7:24:12 AM	Reporter Name	DESKTOP-R0LAL7E\analyst
Last Calib Update	9/6/2022 9:10 AM	Batch State	Processed
Quant Batch Version	10.1	Quant Report Version	10.1
Acq. Time	9/1/2022 3:36 PM	Data File	tq090106.D
Sample Type	Sample	Sample Name	2.0 uL #3257-128-0.5A MDL Blank
Dilution	1	Acq. Method	tq22m0831

Sample Chromatogram

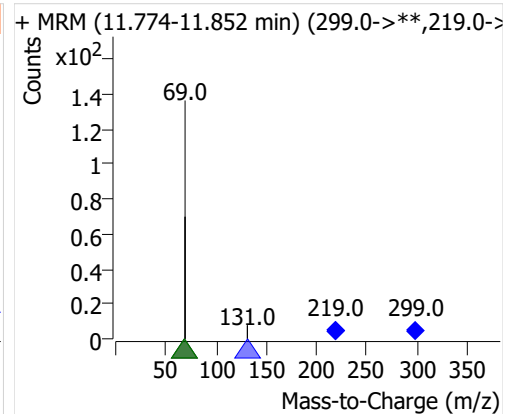
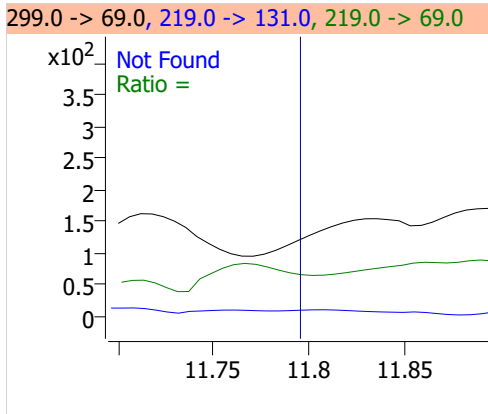
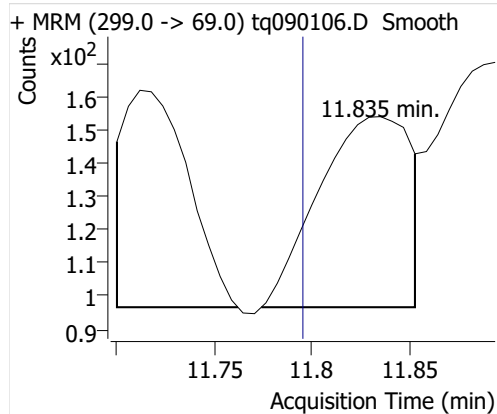


Compound	ISTD	RT	Resp.	ISTD Resp.	Resp. Ratio	Final Conc	Units
4:2 FTOH	6:2 FTOH-C13			27186		ND	ng
5:2sFTOH	6:2 FTOH-C13	11.835	181	27186	0.0067	0.0377	ng
7:2sFTOH	6:2 FTOH-C13	13.143	32	27186	0.0012	0.0031	ng
6:2 FTOH	6:2 FTOH-C13	13.145	346	27186	0.0127	0.0165	ng
8:2 FTOH-C13	6:2 FTOH-C13	14.342	8219	27186	0.3023	0.9784	ng
8:2 FTOH	6:2 FTOH-C13			27186		ND	ng
10:2 FTOH	6:2 FTOH-C13			27186		ND	ng
12:2 FTOH	6:2 FTOH-C13	16.407	18	27186	0.0007	0.0023	ng

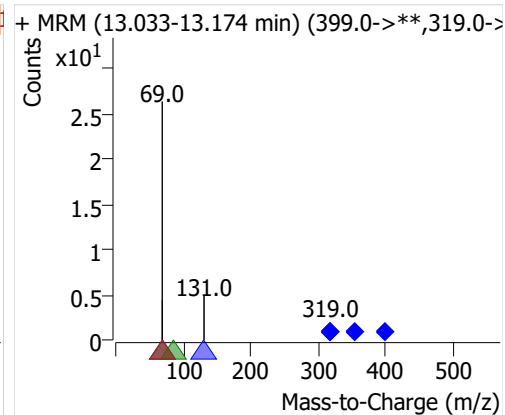
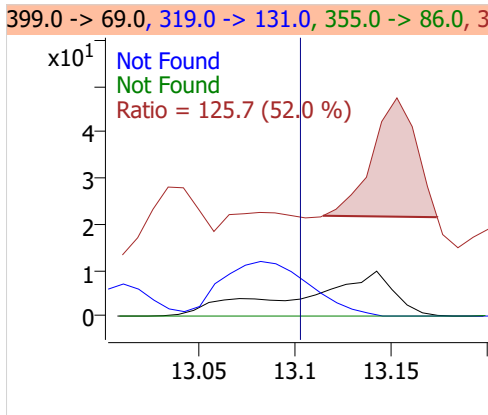
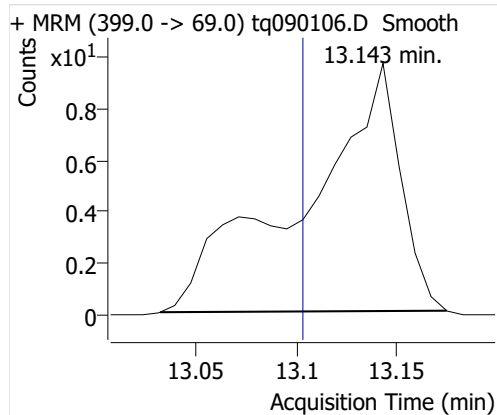
4:2 FTOH



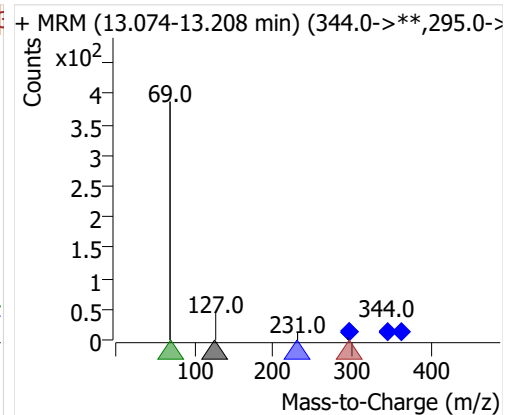
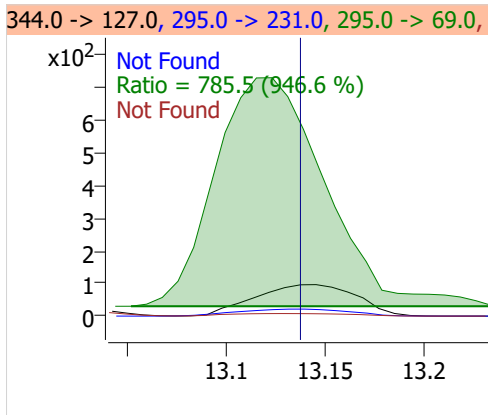
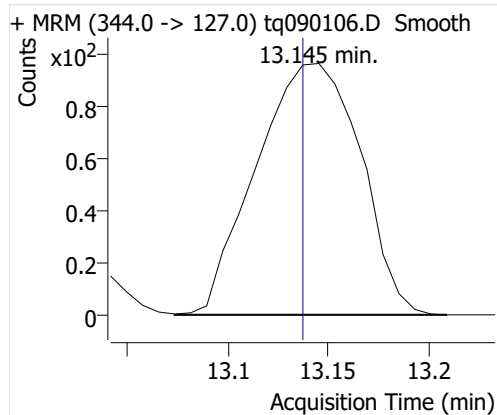
5:2sFTOH



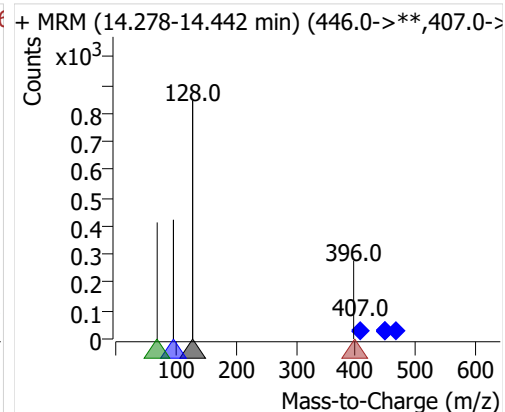
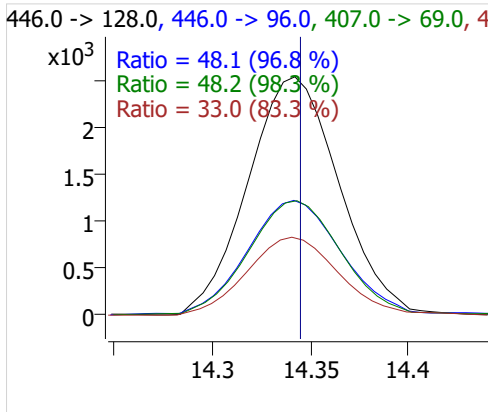
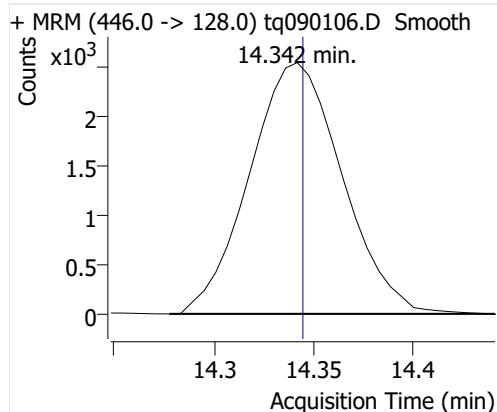
7:2sFTOH



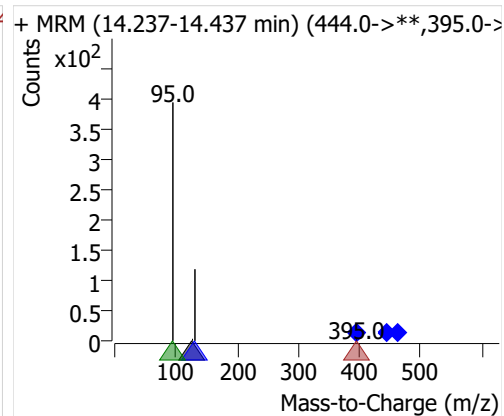
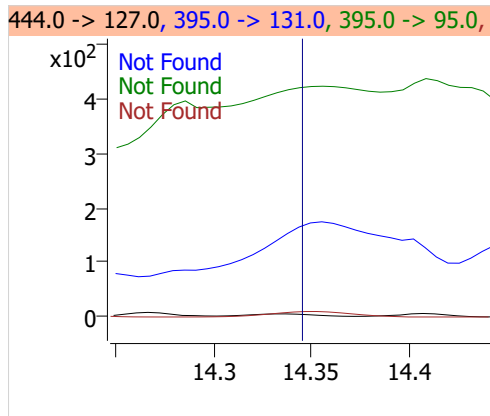
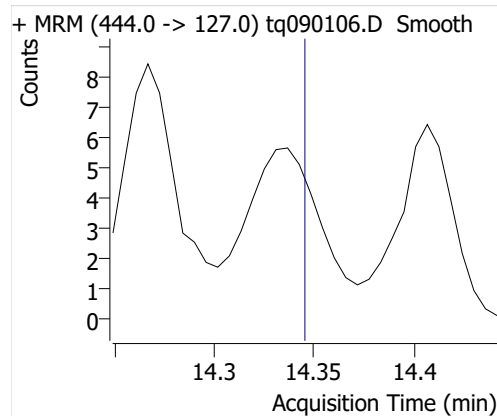
6:2 FTOH



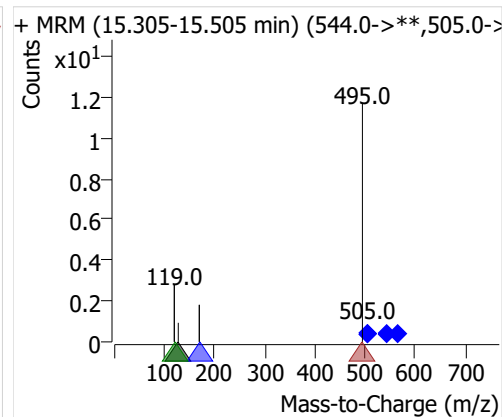
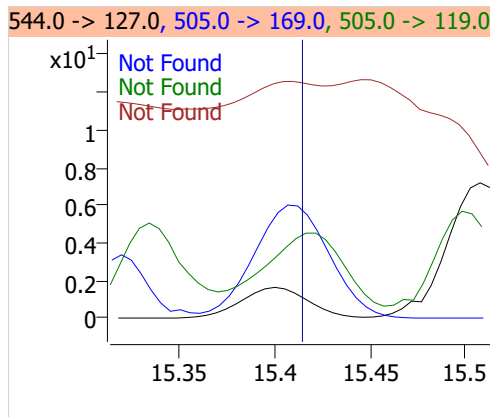
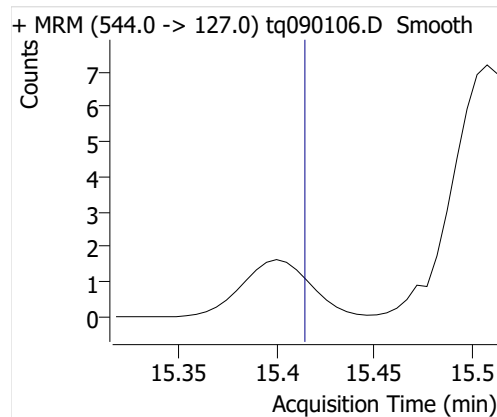
8:2 FTOH-C13



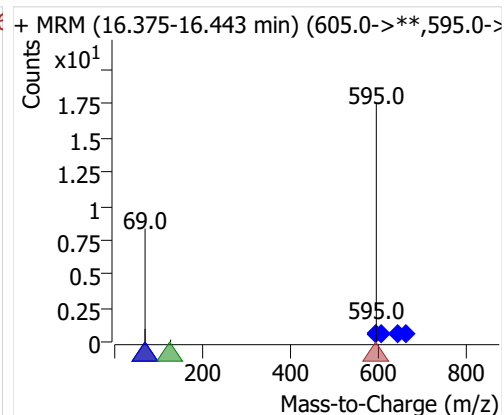
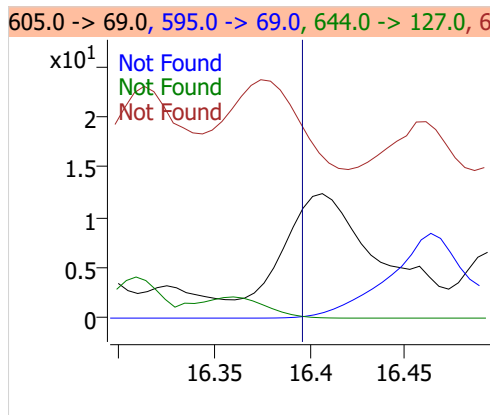
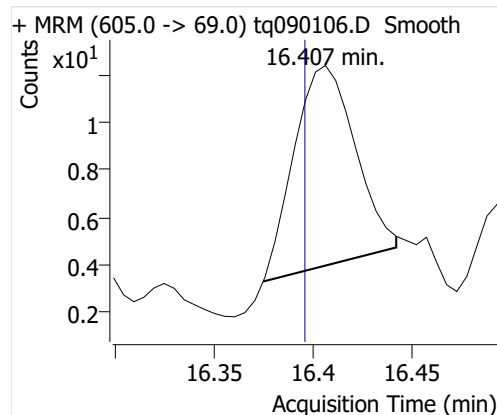
8:2 FTOH



10:2 FTOH



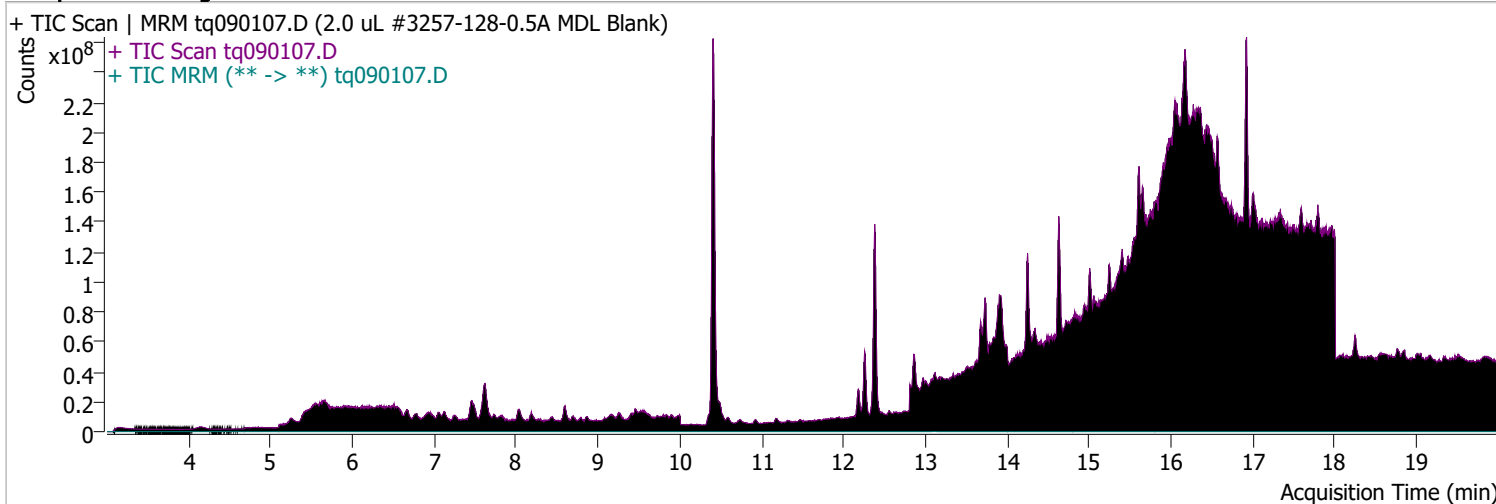
12:2 FTOH



Quantitative Analysis Sample Report

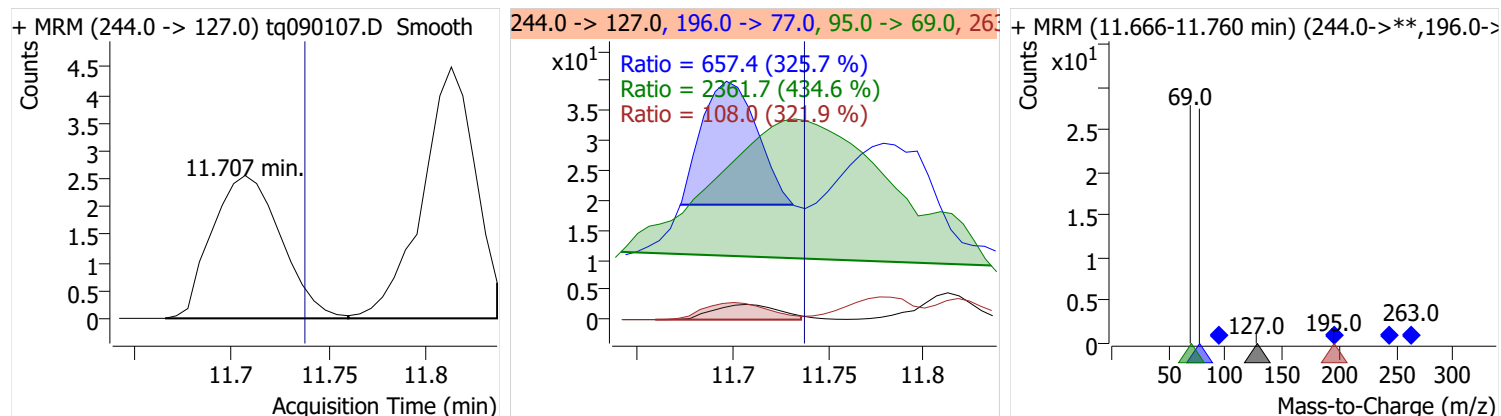
Batch Path	D:\MassHunter\GCMS\1\data\01sep22\QuantResults\mdlblk.batch.bin		
Analysis Time	9/22/2022 7:17 AM	Analyst Name	DESKTOP-R0LAL7E\analyst
Report Time	9/22/2022 7:24:13 AM	Reporter Name	DESKTOP-R0LAL7E\analyst
Last Calib Update	9/6/2022 9:10 AM	Batch State	Processed
Quant Batch Version	10.1	Quant Report Version	10.1
Acq. Time	9/1/2022 4:16 PM	Data File	tq090107.D
Sample Type	Sample	Sample Name	2.0 uL #3257-128-0.5A MDL Blank
Dilution	1	Acq. Method	tq22m0831

Sample Chromatogram

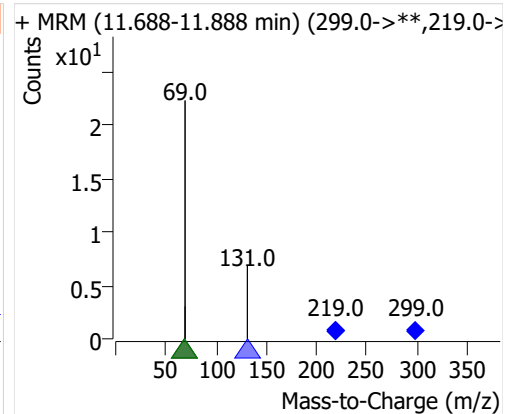
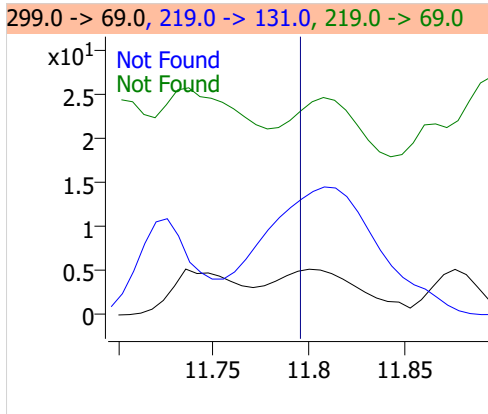
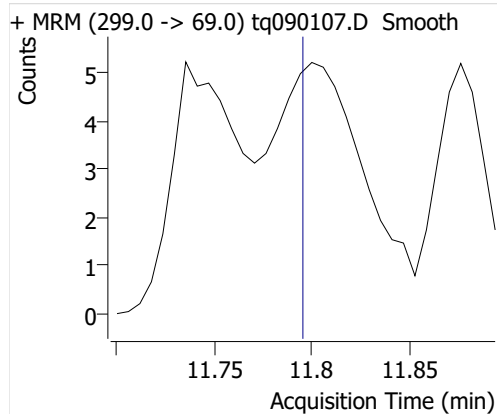


Compound	ISTD	RT	Resp.	ISTD Resp.	Resp. Ratio	Final Conc	Units
4:2 FTOH	6:2 FTOH-C13	11.707	6	25479	0.0002	0.0006	ng
5:2sFTOH	6:2 FTOH-C13			25479		ND	ng
7:2sFTOH	6:2 FTOH-C13			25479		ND	ng
6:2 FTOH	6:2 FTOH-C13	13.129	359	25479	0.0141	0.0183	ng
8:2 FTOH-C13	6:2 FTOH-C13	14.342	8542	25479	0.3353	1.0849	ng
8:2 FTOH	6:2 FTOH-C13			25479		ND	ng
10:2 FTOH	6:2 FTOH-C13			25479		ND	ng
12:2 FTOH	6:2 FTOH-C13	16.397	31	25479	0.0012	0.0043	ng

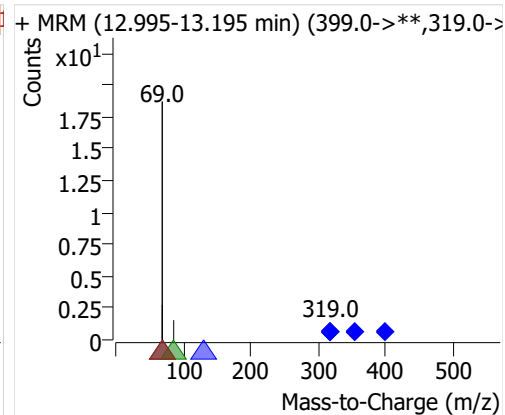
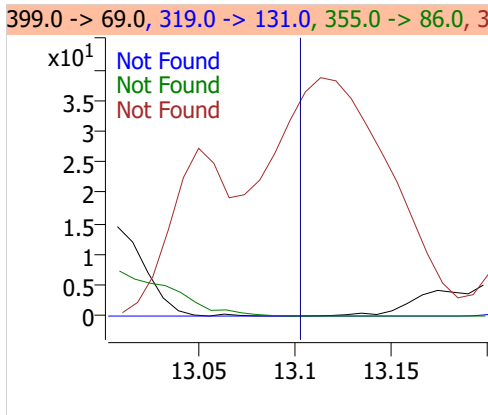
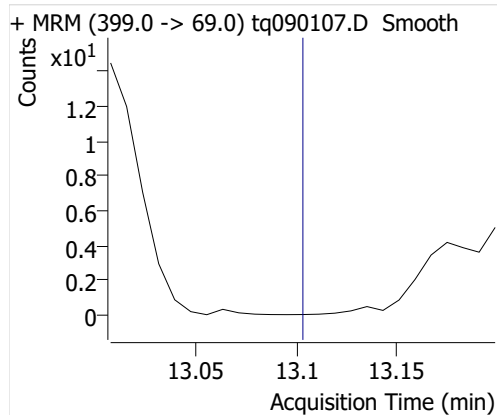
4:2 FTOH



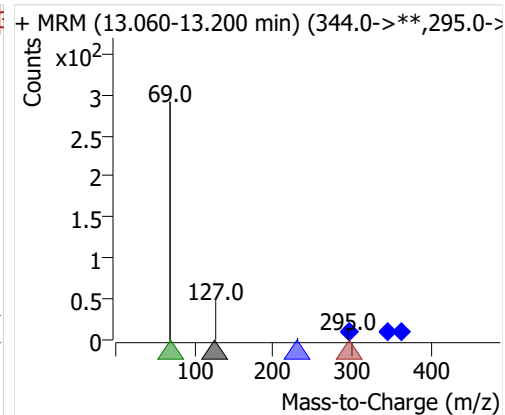
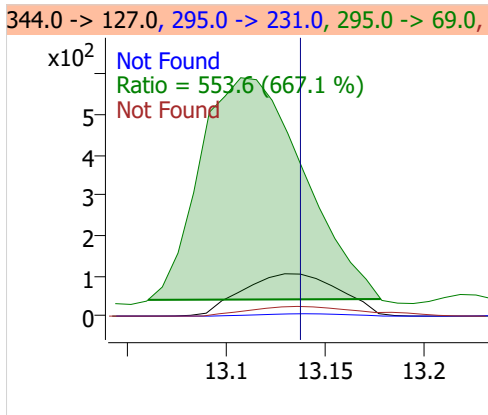
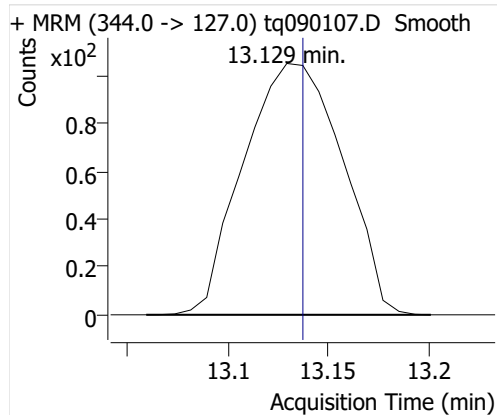
5:2sFTOH



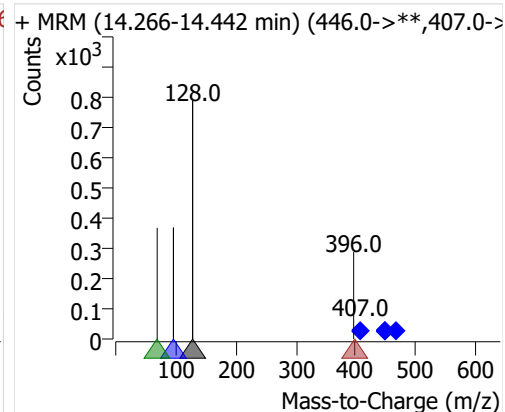
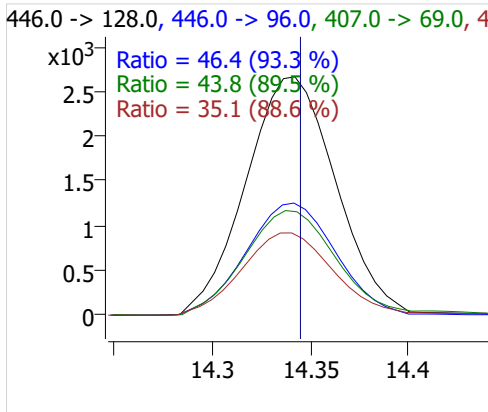
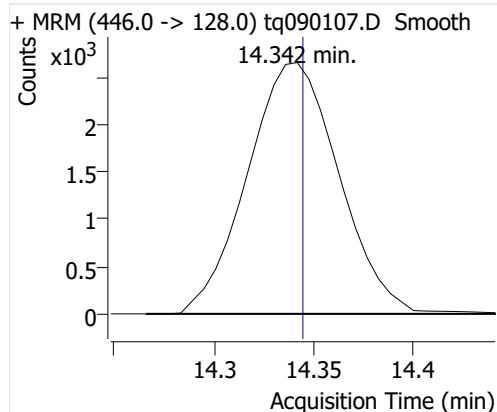
7:2sFTOH



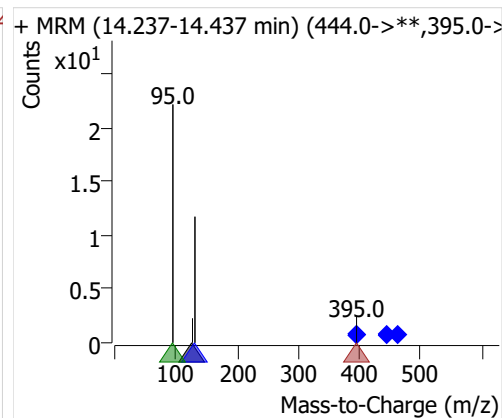
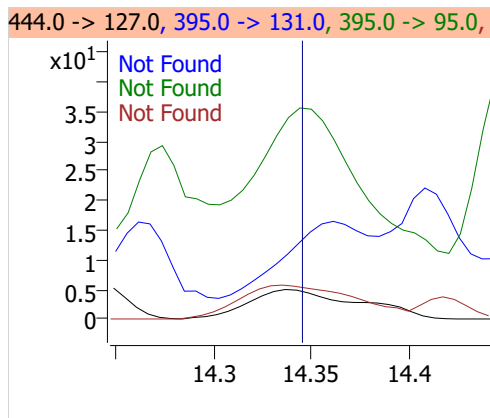
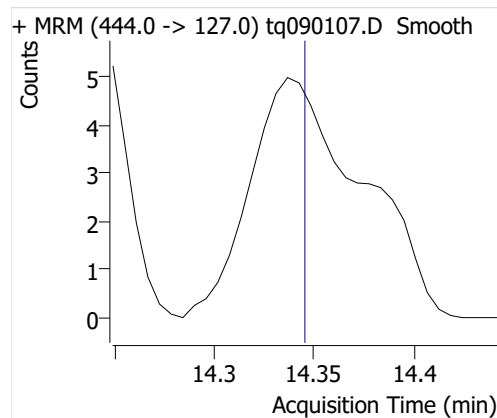
6:2 FTOH



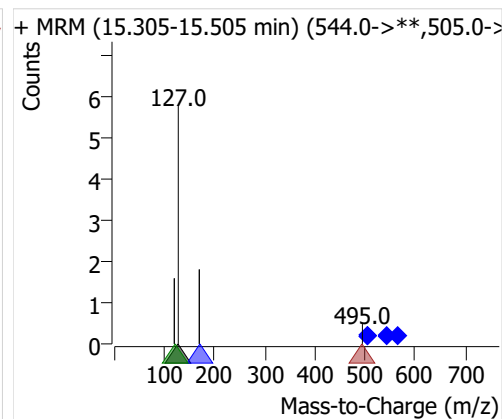
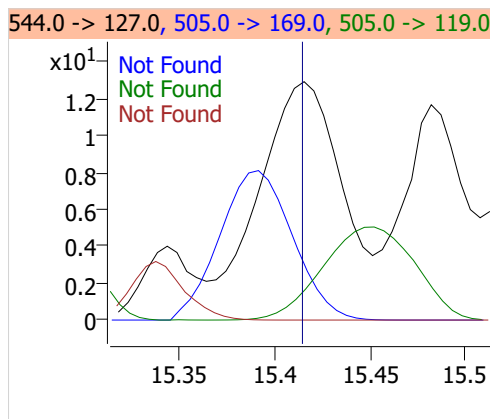
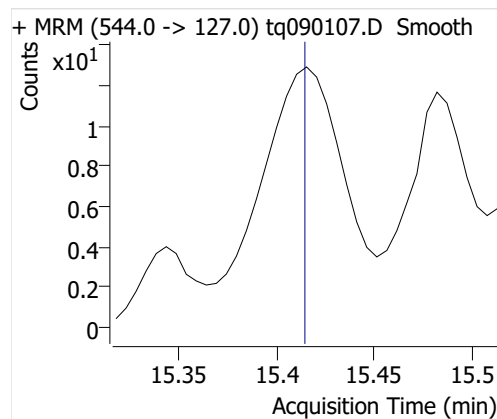
8:2 FTOH-C13



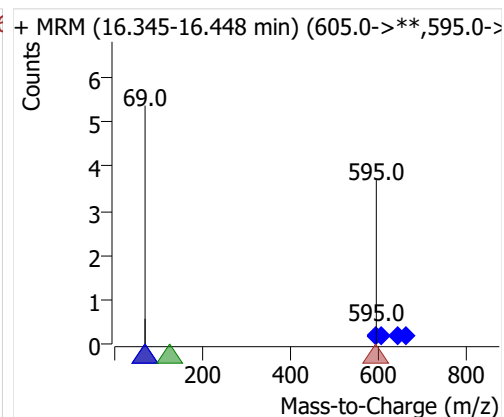
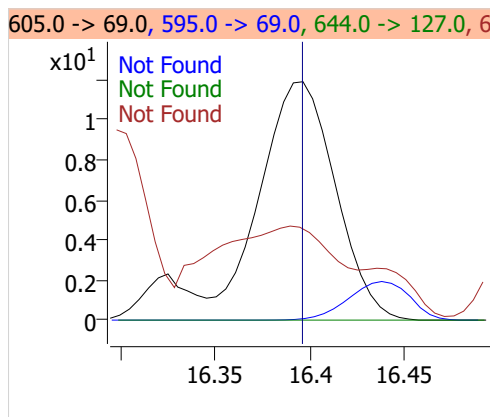
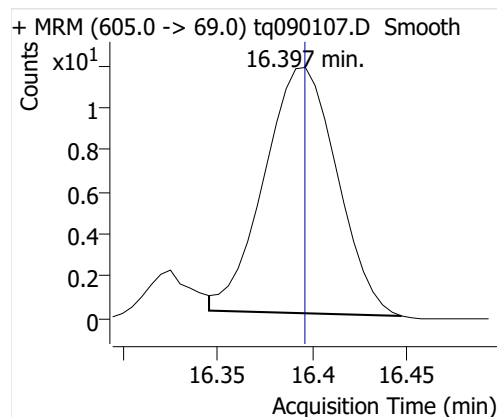
8:2 FTOH



10:2 FTOH



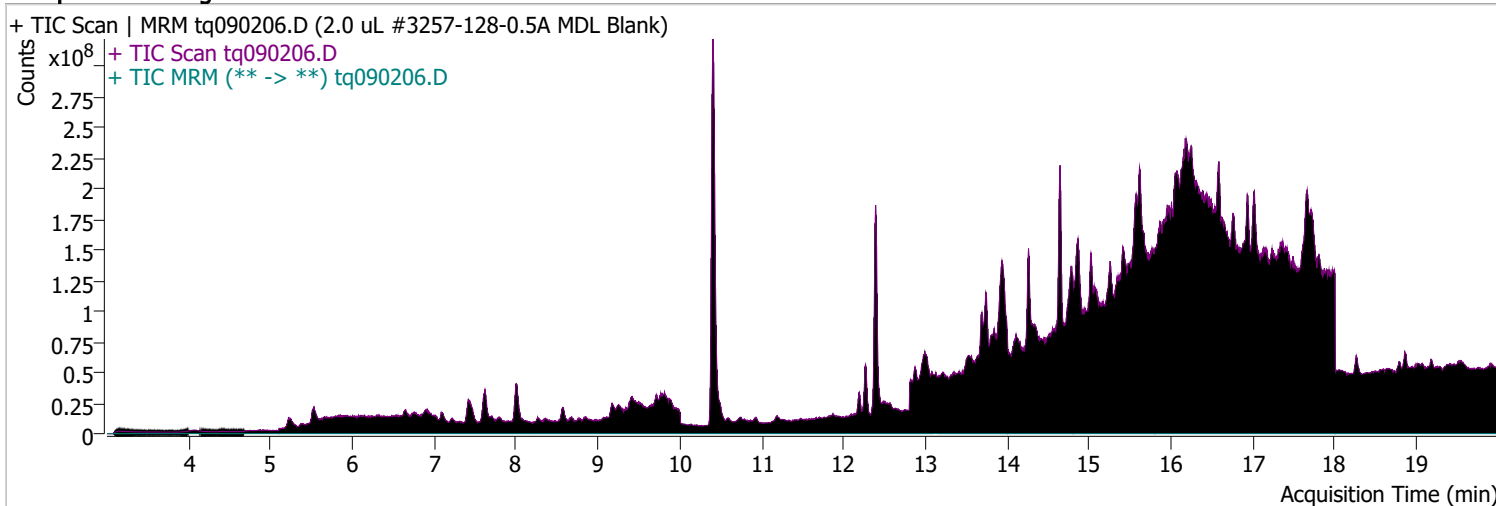
12:2 FTOH



Quantitative Analysis Sample Report

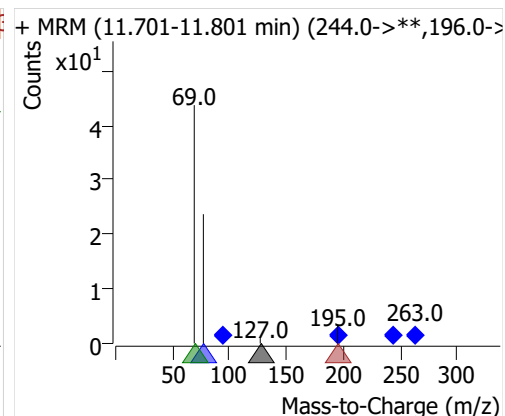
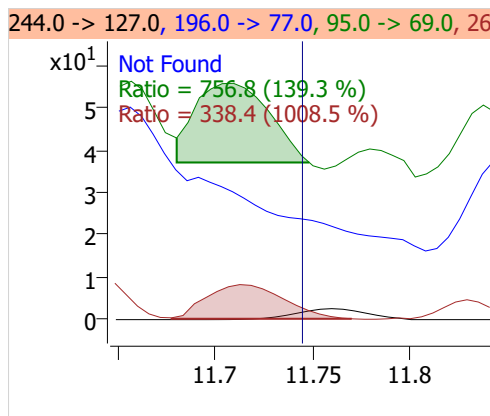
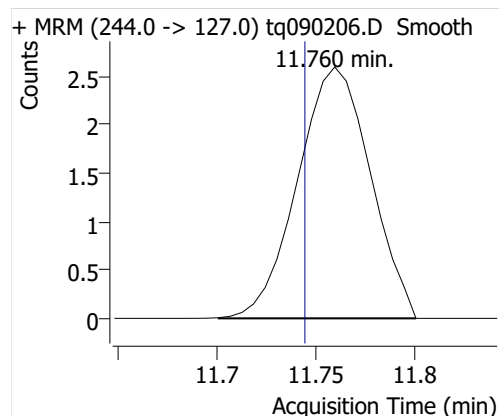
Batch Path D:\MassHunter\GCMS\1\data\01sep22\QuantResults\mdlblk.batch.bin
Analysis Time 9/22/2022 7:17 AM **Analyst Name** DESKTOP-R0LAL7E\analyst
Report Time 9/22/2022 7:24:13 AM **Reporter Name** DESKTOP-R0LAL7E\analyst
Last Calib Update 9/6/2022 9:10 AM **Batch State** Processed
Quant Batch Version 10.1 **Quant Report Version** 10.1
Acq. Time 9/2/2022 5:24 PM **Data File** tq090206.D
Sample Type Sample **Sample Name** 2.0 uL #3257-128-0.5A MDL Blank
Dilution 1 **Acq. Method** tq22m0831

Sample Chromatogram

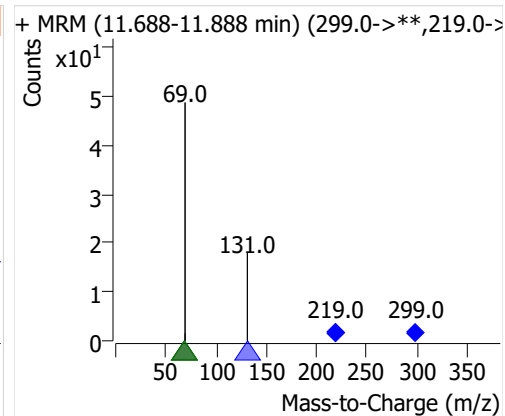
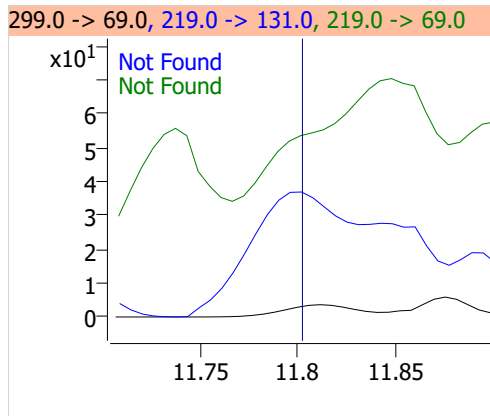
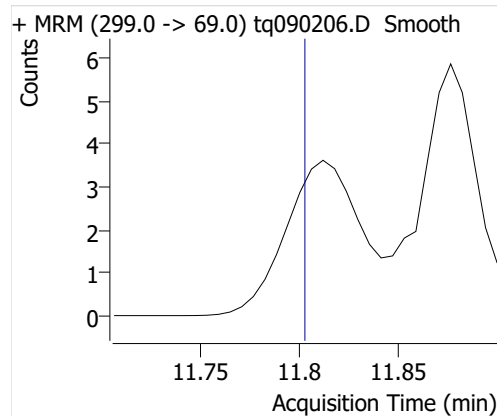


Compound	ISTD	RT	Resp.	ISTD Resp.	Resp. Ratio	Final Conc	Units
4:2 FTOH	6:2 FTOH-C13	11.760	7	24369	0.0003	0.0007	ng
5:2sFTOH	6:2 FTOH-C13			24369		ND	ng
7:2sFTOH	6:2 FTOH-C13			24369		ND	ng
6:2 FTOH	6:2 FTOH-C13	13.145	158	24369	0.0065	0.0084	ng
8:2 FTOH-C13	6:2 FTOH-C13	14.348	8244	24369	0.3383	1.0948	ng
8:2 FTOH	6:2 FTOH-C13	14.407	28	24369	0.0012	0.0051	ng
10:2 FTOH	6:2 FTOH-C13			24369		ND	ng
12:2 FTOH	6:2 FTOH-C13	16.401	18	24369	0.0007	0.0026	ng

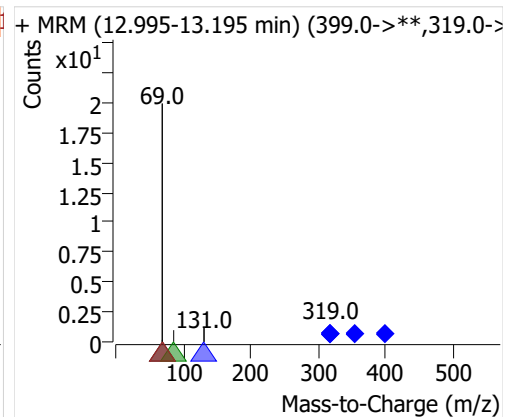
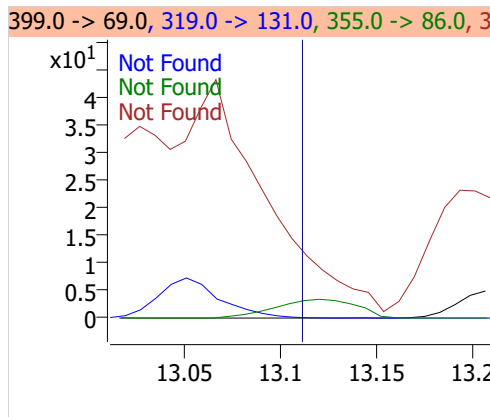
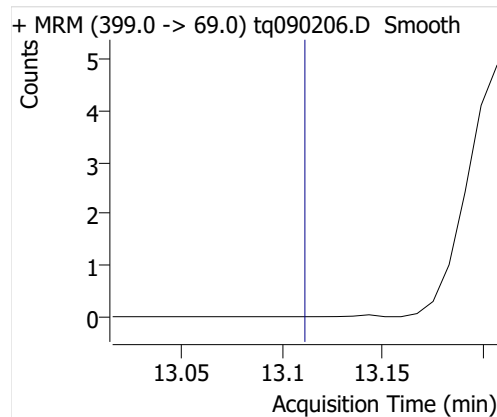
4:2 FTOH



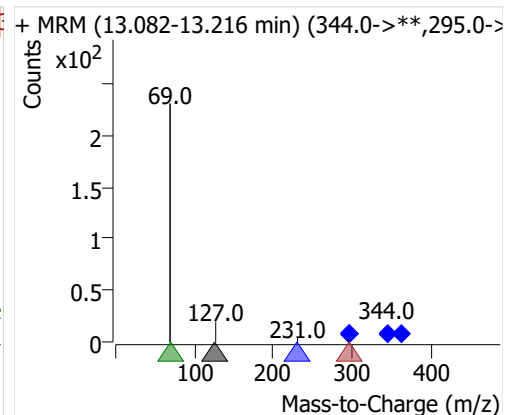
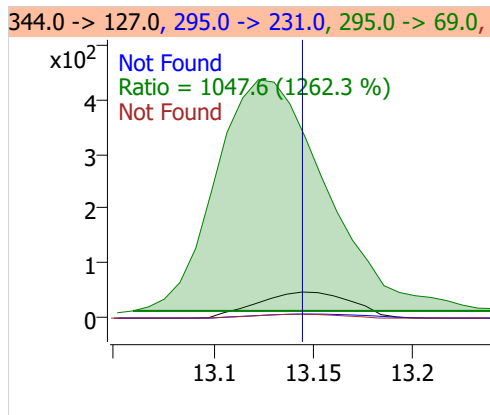
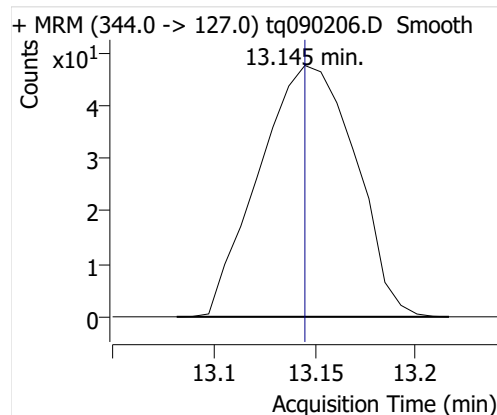
5:2sFTOH



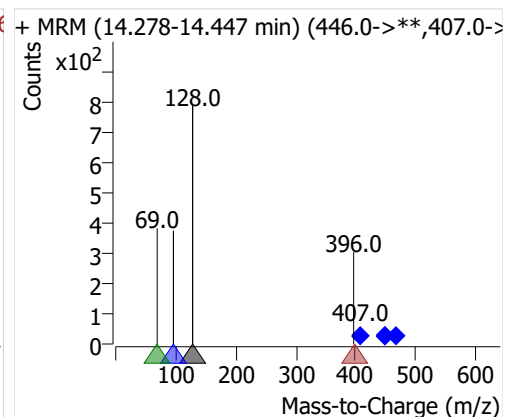
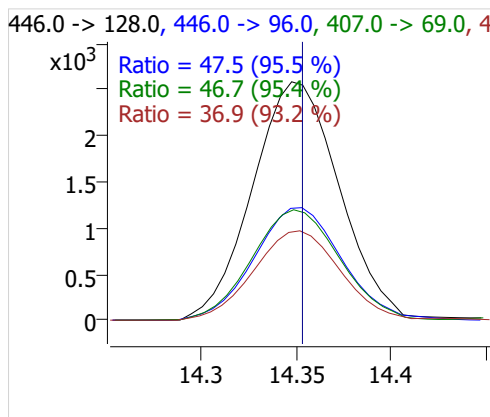
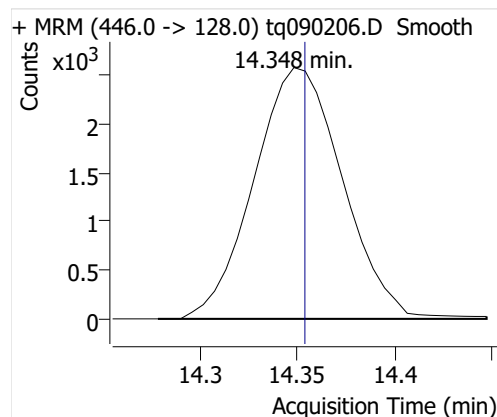
7:2sFTOH



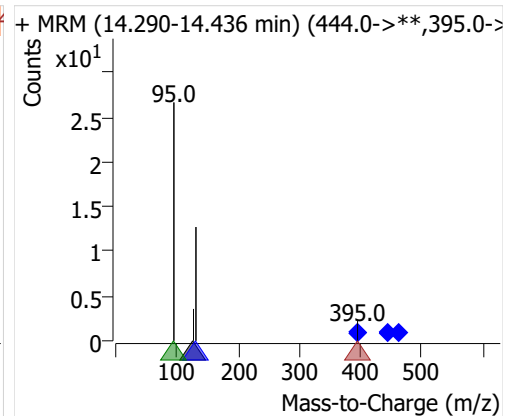
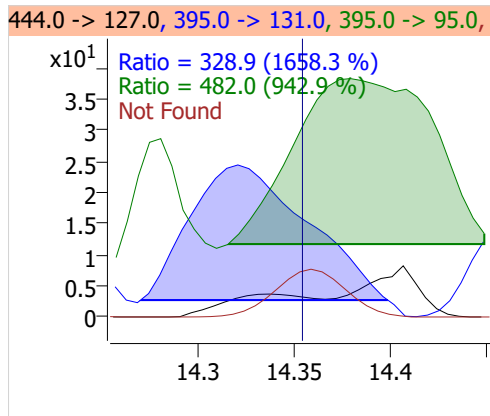
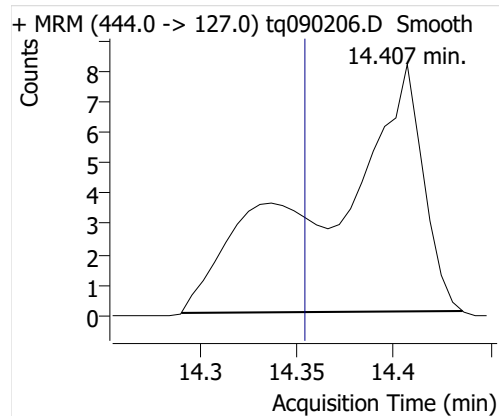
6:2 FTOH



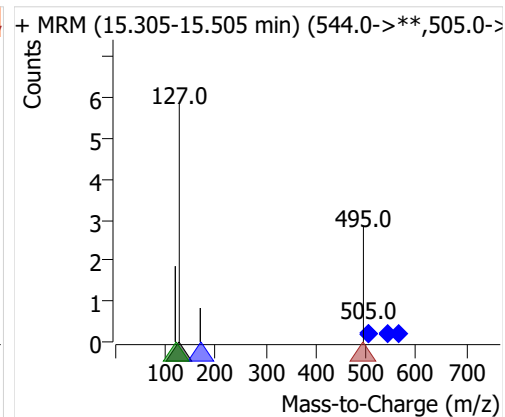
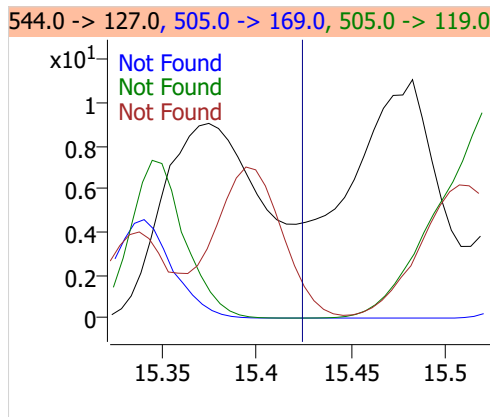
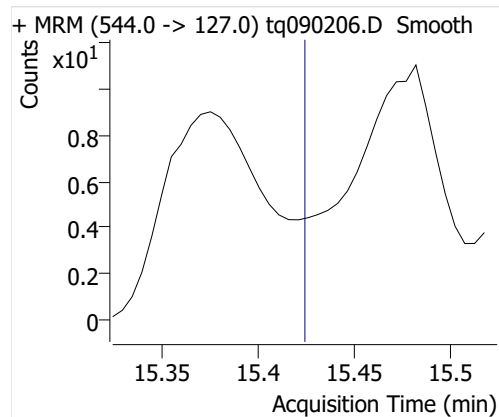
8:2 FTOH-C13



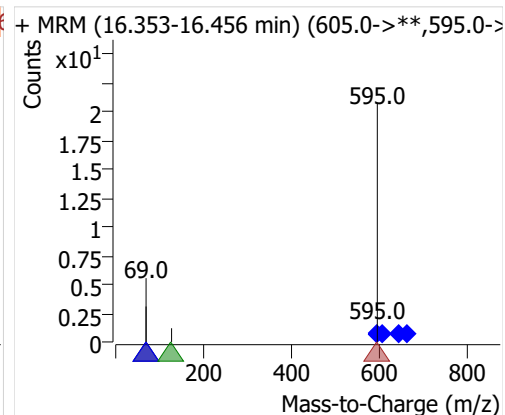
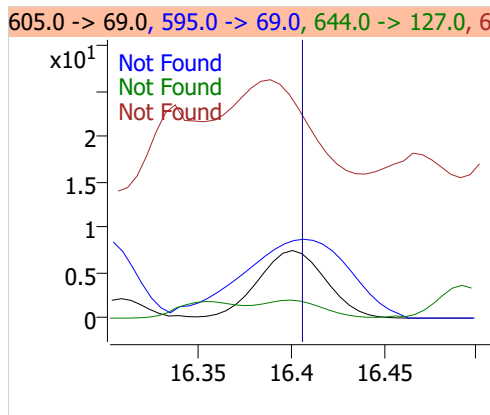
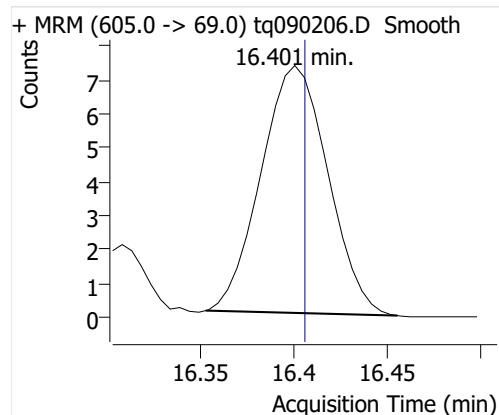
8:2 FTOH



10:2 FTOH



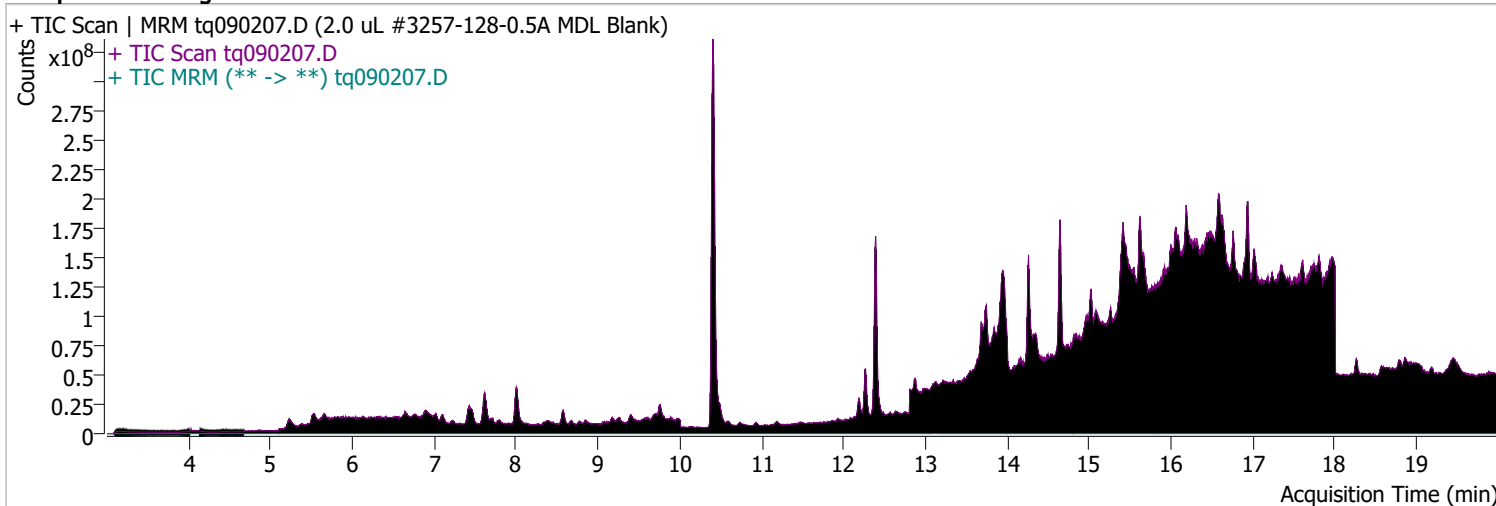
12:2 FTOH



Quantitative Analysis Sample Report

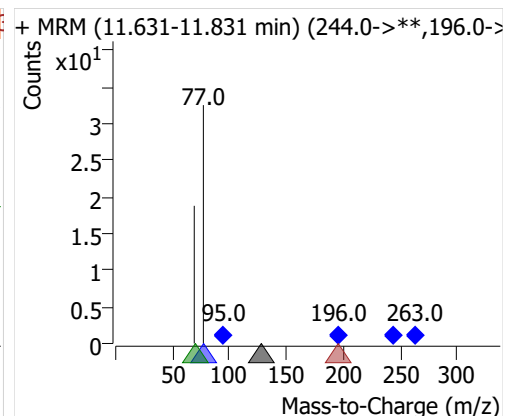
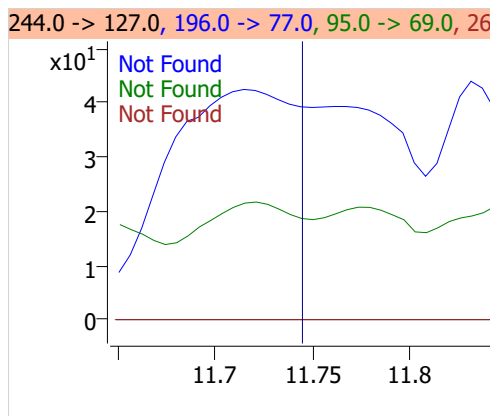
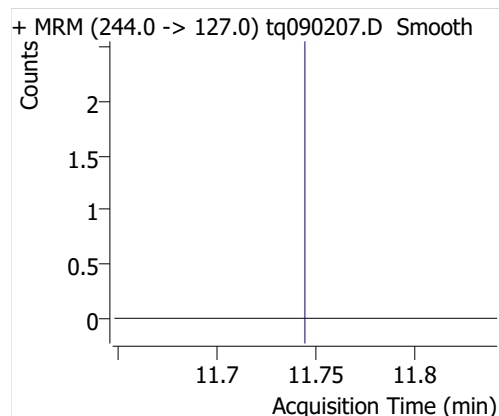
Batch Path D:\MassHunter\GCMS\1\data\01sep22\QuantResults\mdlblk.batch.bin
Analysis Time 9/22/2022 7:17 AM **Analyst Name** DESKTOP-R0LAL7E\analyst
Report Time 9/22/2022 7:24:14 AM **Reporter Name** DESKTOP-R0LAL7E\analyst
Last Calib Update 9/6/2022 9:10 AM **Batch State** Processed
Quant Batch Version 10.1 **Quant Report Version** 10.1
Acq. Time 9/2/2022 6:05 PM **Data File** tq090207.D
Sample Type Sample **Sample Name** 2.0 uL #3257-128-0.5A MDL Blank
Dilution 1 **Acq. Method** tq22m0831

Sample Chromatogram

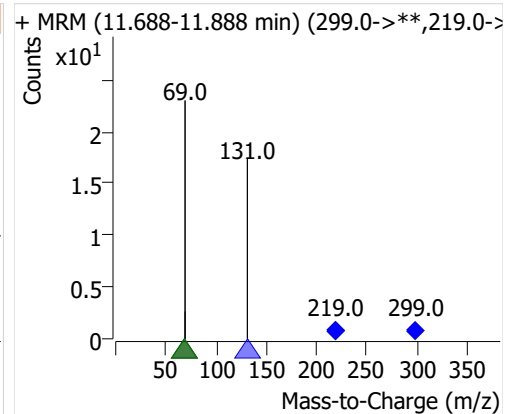
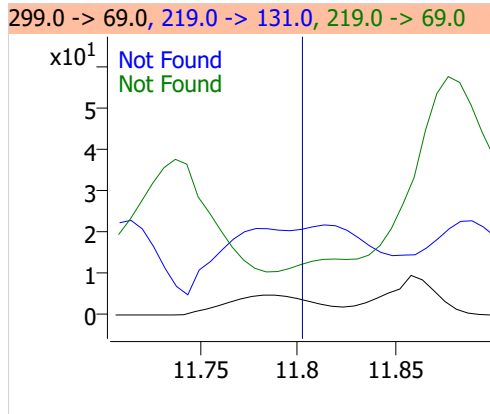
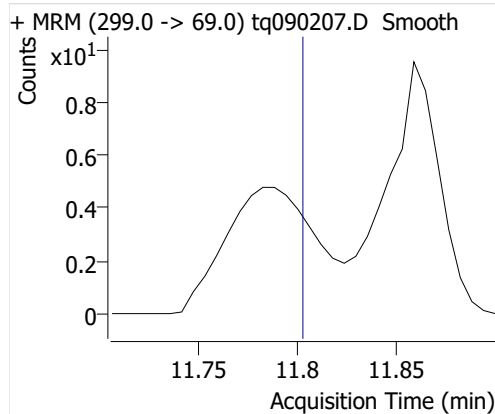


Compound	ISTD	RT	Resp.	ISTD Resp.	Resp. Ratio	Final Conc	Units
4:2 FTOH	6:2 FTOH-C13			26053		ND	ng
5:2sFTOH	6:2 FTOH-C13			26053		ND	ng
7:2sFTOH	6:2 FTOH-C13	13.151	39	26053	0.0015	0.0039	ng
6:2 FTOH	6:2 FTOH-C13	13.145	53	26053	0.0020	0.0026	ng
8:2 FTOH-C13	6:2 FTOH-C13	14.354	8325	26053	0.3195	1.0340	ng
8:2 FTOH	6:2 FTOH-C13			26053		ND	ng
10:2 FTOH	6:2 FTOH-C13			26053		ND	ng
12:2 FTOH	6:2 FTOH-C13			26053		ND	ng

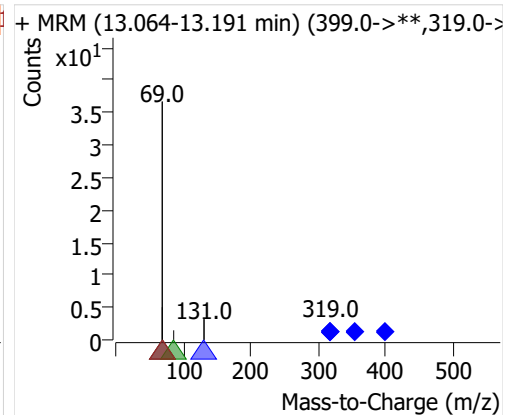
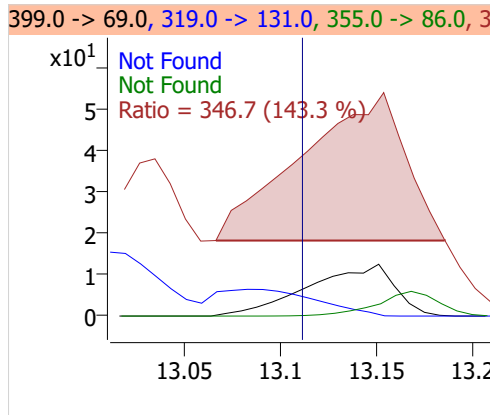
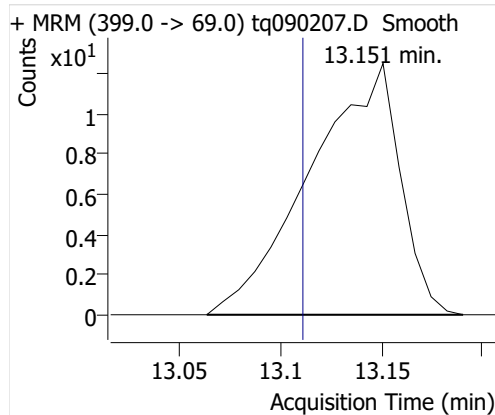
4:2 FTOH



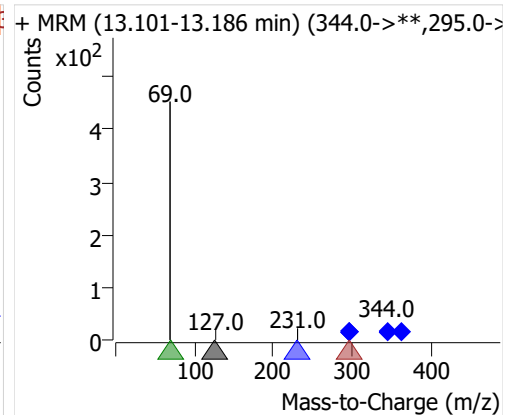
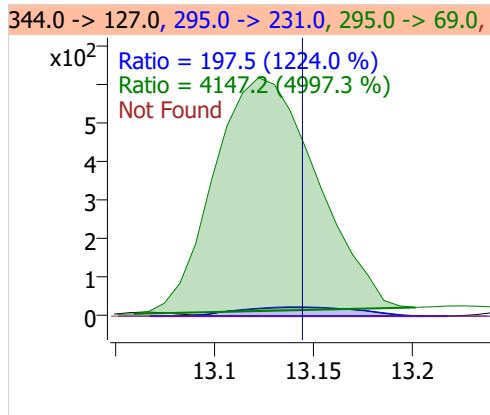
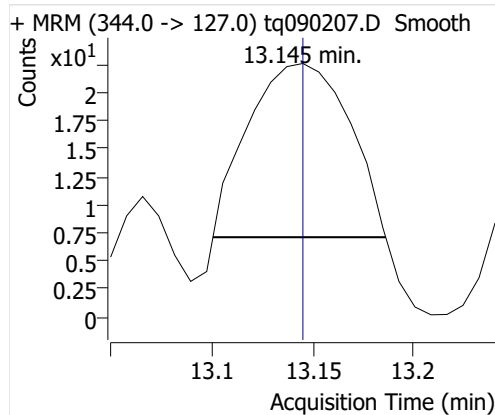
5:2sFTOH



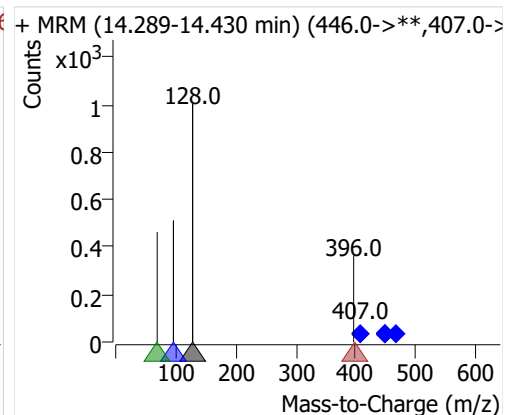
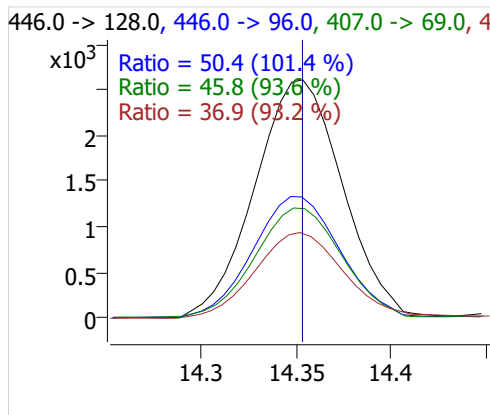
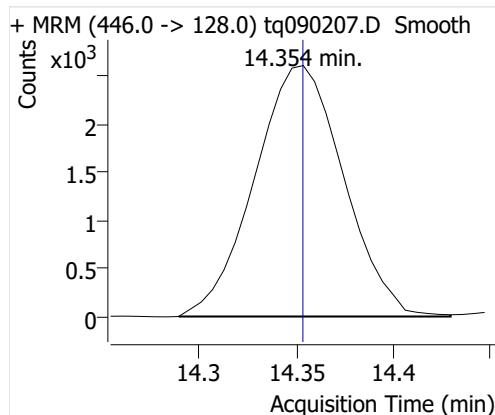
7:2sFTOH



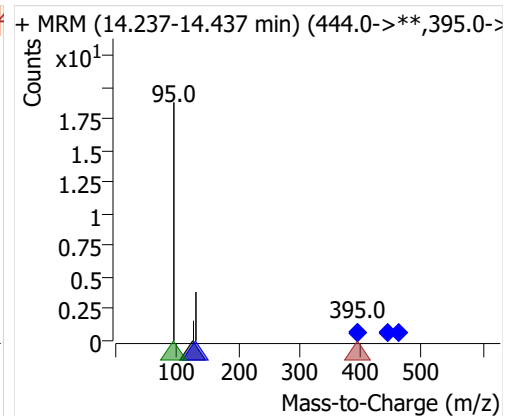
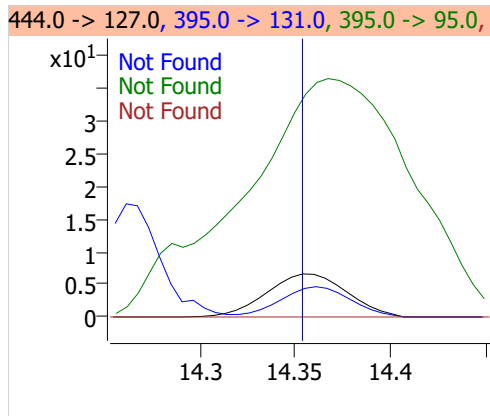
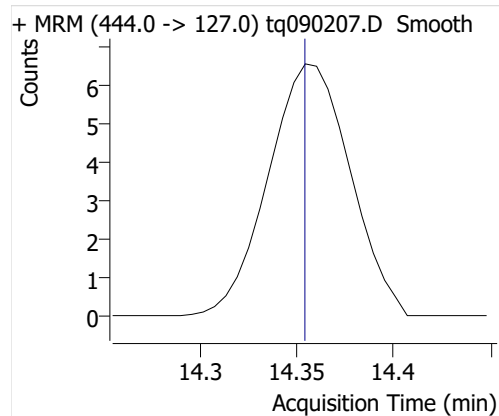
6:2 FTOH



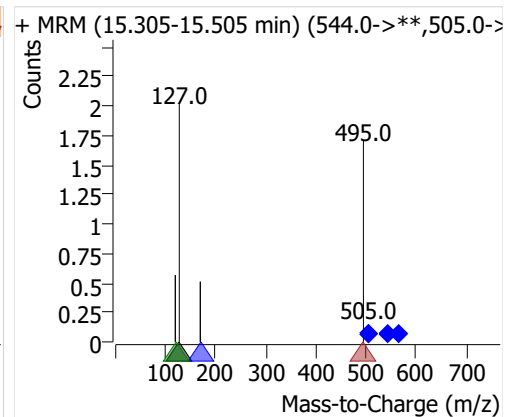
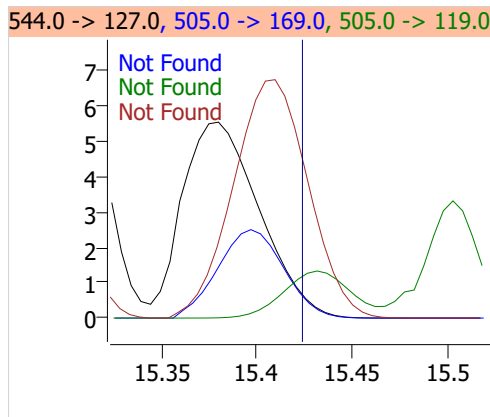
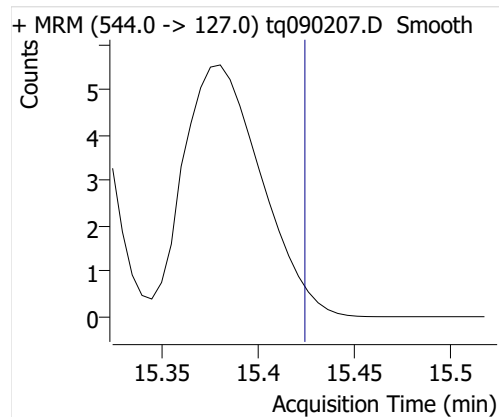
8:2 FTOH-C13



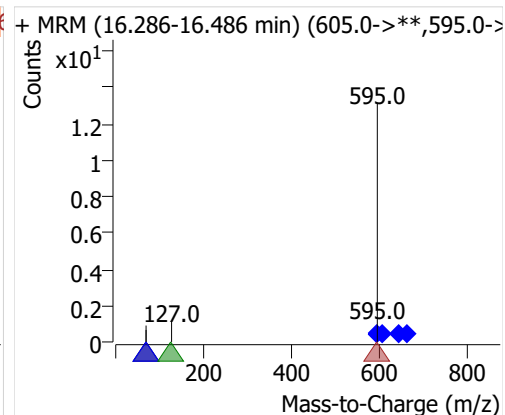
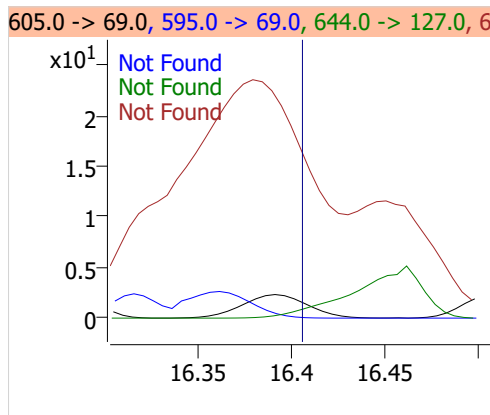
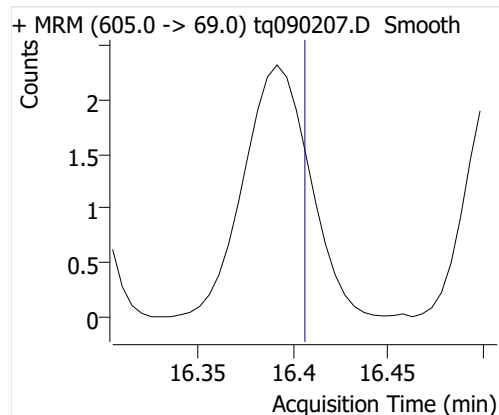
8:2 FTOH



10:2 FTOH



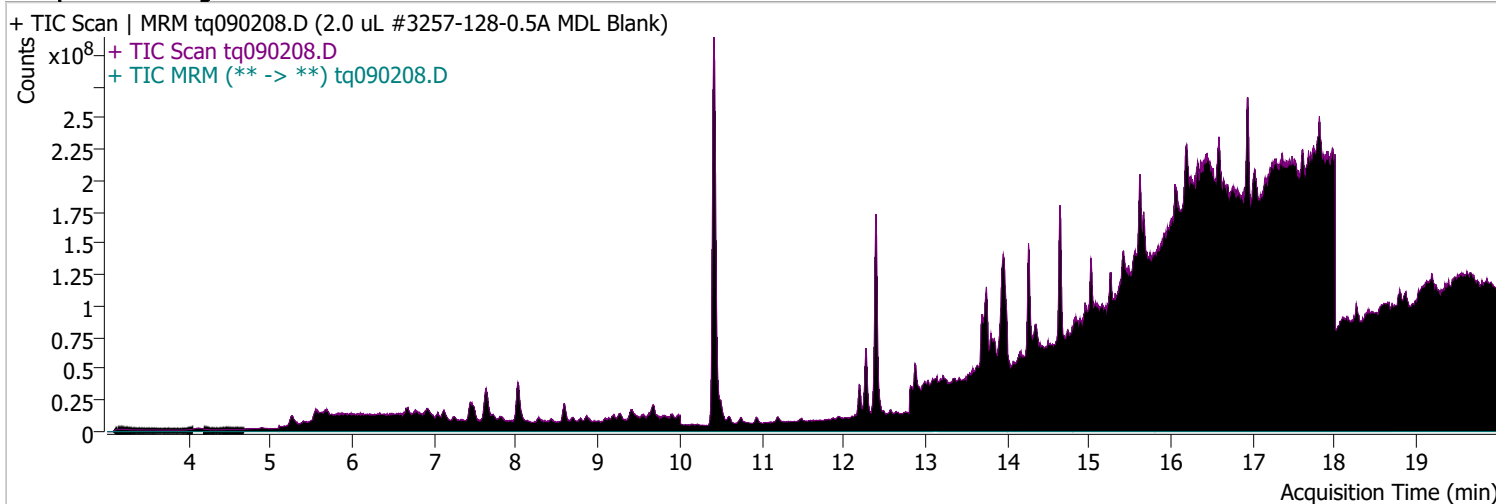
12:2 FTOH



Quantitative Analysis Sample Report

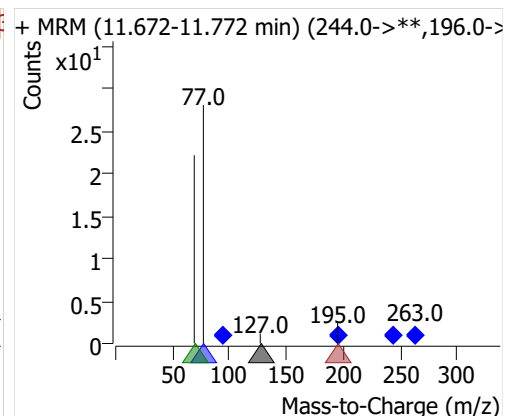
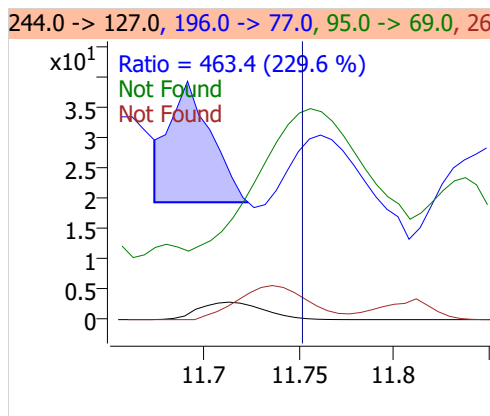
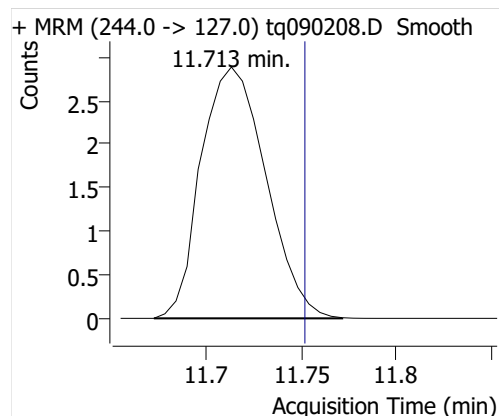
Batch Path D:\MassHunter\GCMS\1\data\01sep22\QuantResults\mdlblk.batch.bin
Analysis Time 9/22/2022 7:17 AM **Analyst Name** DESKTOP-R0LAL7E\analyst
Report Time 9/22/2022 7:24:15 AM **Reporter Name** DESKTOP-R0LAL7E\analyst
Last Calib Update 9/6/2022 9:10 AM **Batch State** Processed
Quant Batch Version 10.1 **Quant Report Version** 10.1
Acq. Time 9/2/2022 6:46 PM **Data File** tq090208.D
Sample Type Sample **Sample Name** 2.0 uL #3257-128-0.5A MDL Blank
Dilution 1 **Acq. Method** tq22m0831

Sample Chromatogram

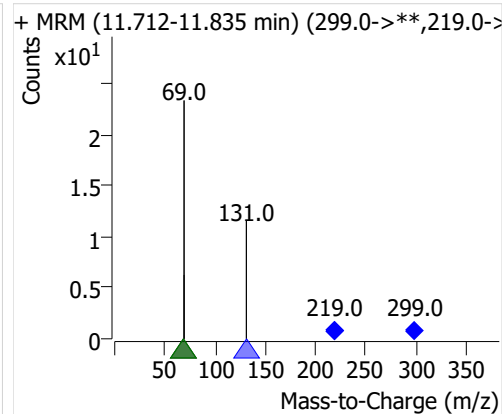
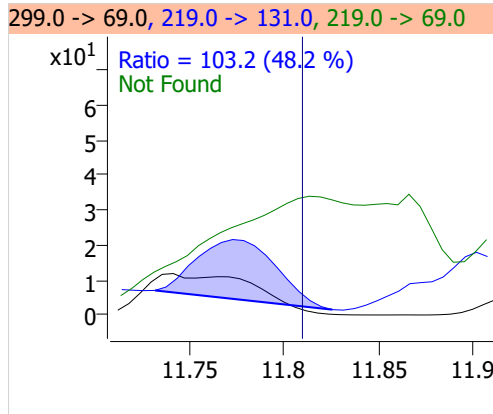
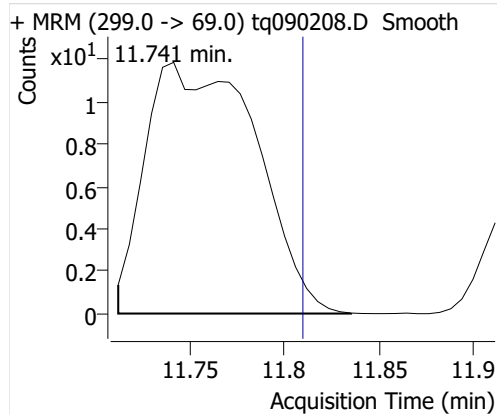


Compound	ISTD	RT	Resp.	ISTD Resp.	Resp. Ratio	Final Conc	Units
4:2 FTOH	6:2 FTOH-C13	11.713	7	27041	0.0003	0.0006	ng
5:2sFTOH	6:2 FTOH-C13	11.741	48	27041	0.0018	0.0101	ng
7:2sFTOH	6:2 FTOH-C13			27041		ND	ng
6:2 FTOH	6:2 FTOH-C13	13.153	118	27041	0.0044	0.0057	ng
8:2 FTOH-C13	6:2 FTOH-C13	14.354	8346	27041	0.3086	0.9988	ng
8:2 FTOH	6:2 FTOH-C13			27041		ND	ng
10:2 FTOH	6:2 FTOH-C13			27041		ND	ng
12:2 FTOH	6:2 FTOH-C13	16.407	56	27041	0.0021	0.0073	ng

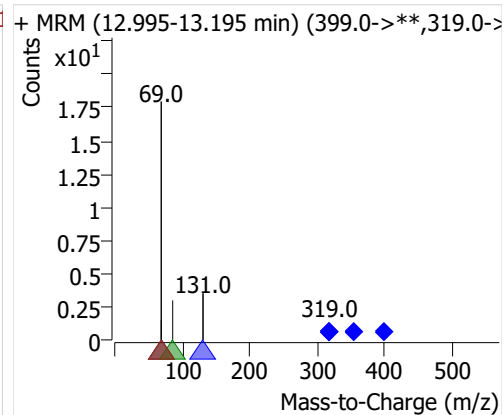
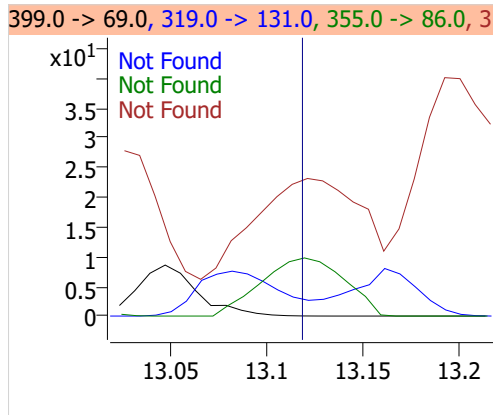
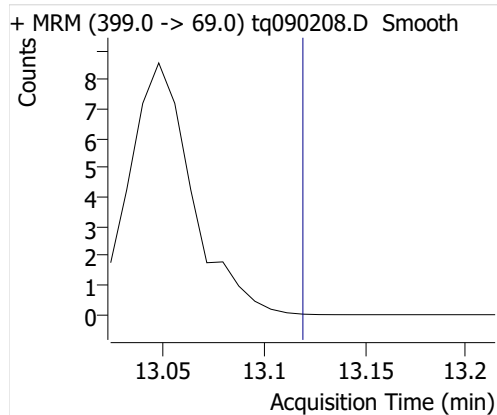
4:2 FTOH



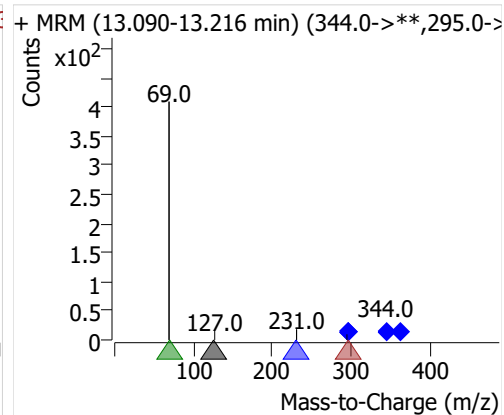
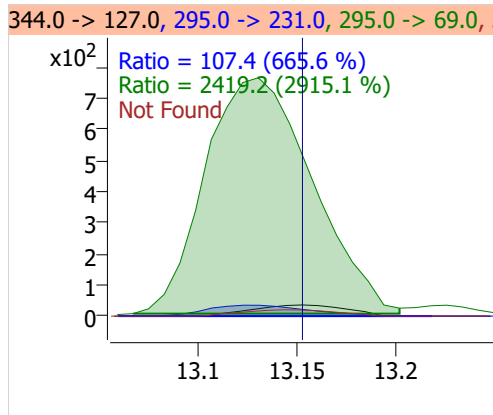
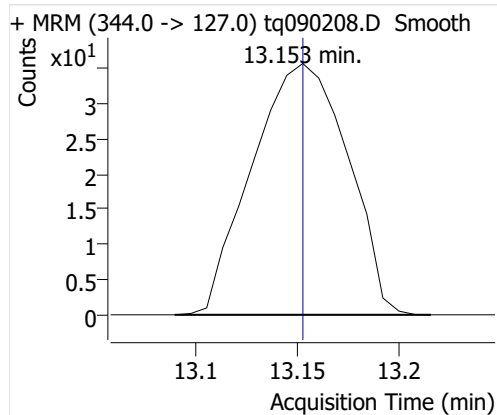
5:2sFTOH



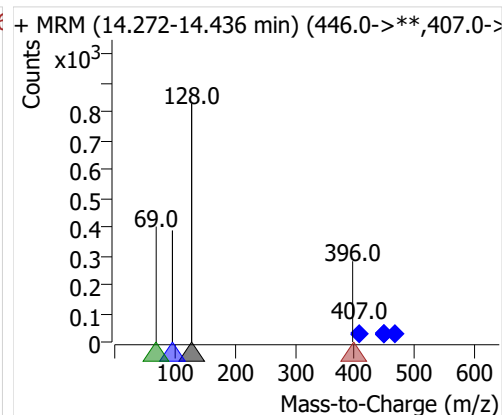
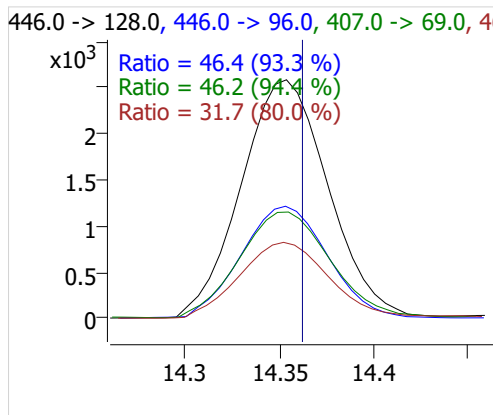
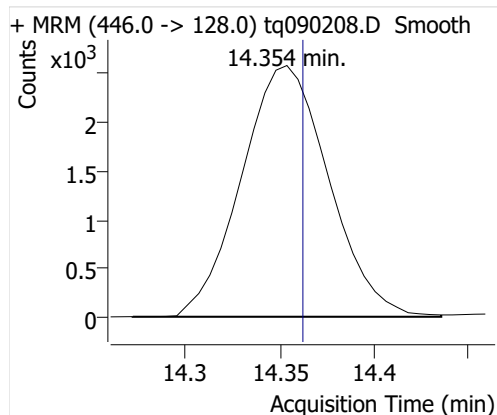
7:2sFTOH



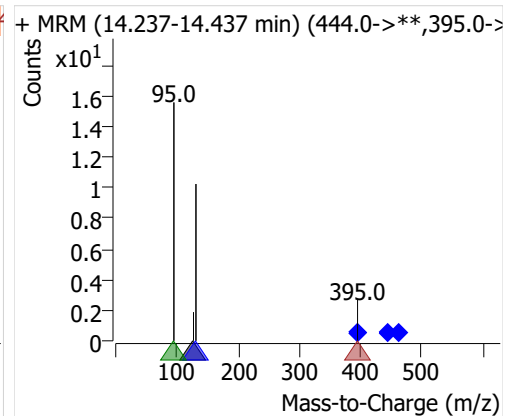
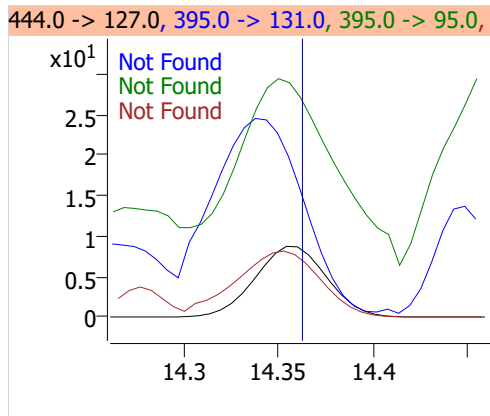
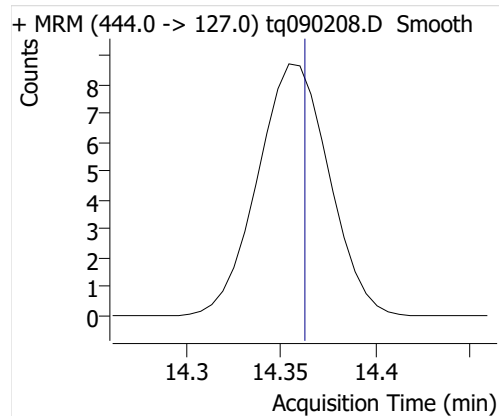
6:2 FTOH



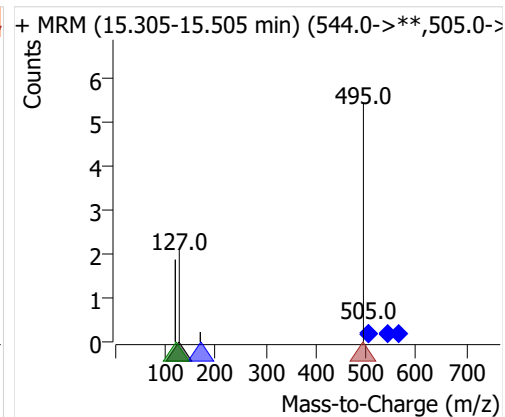
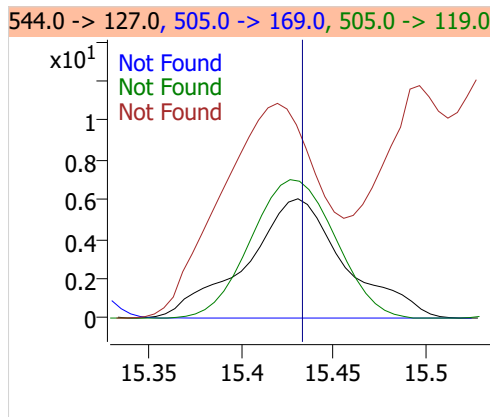
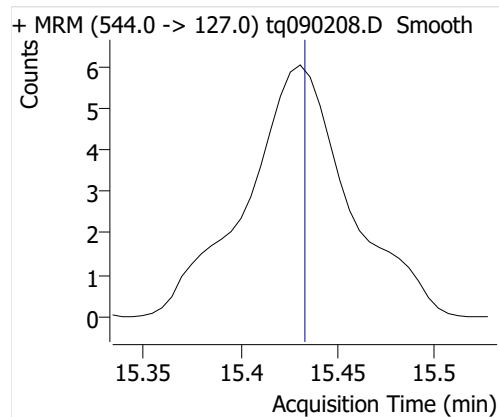
8:2 FTOH-C13



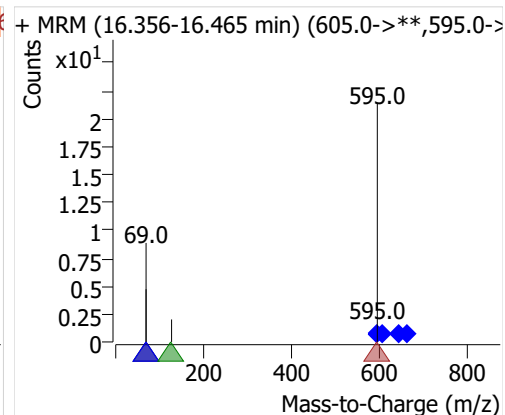
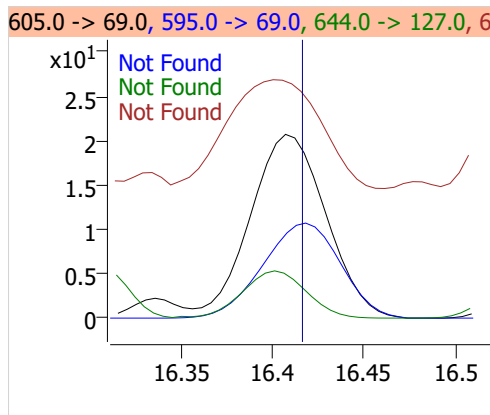
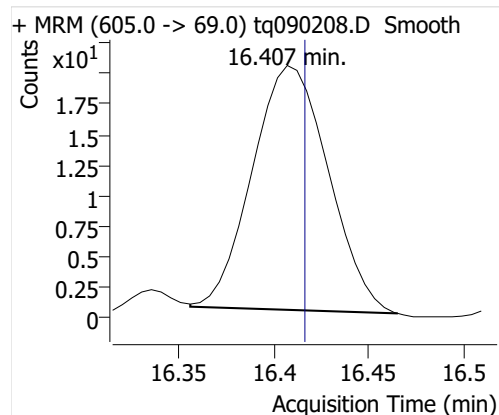
8:2 FTOH



10:2 FTOH



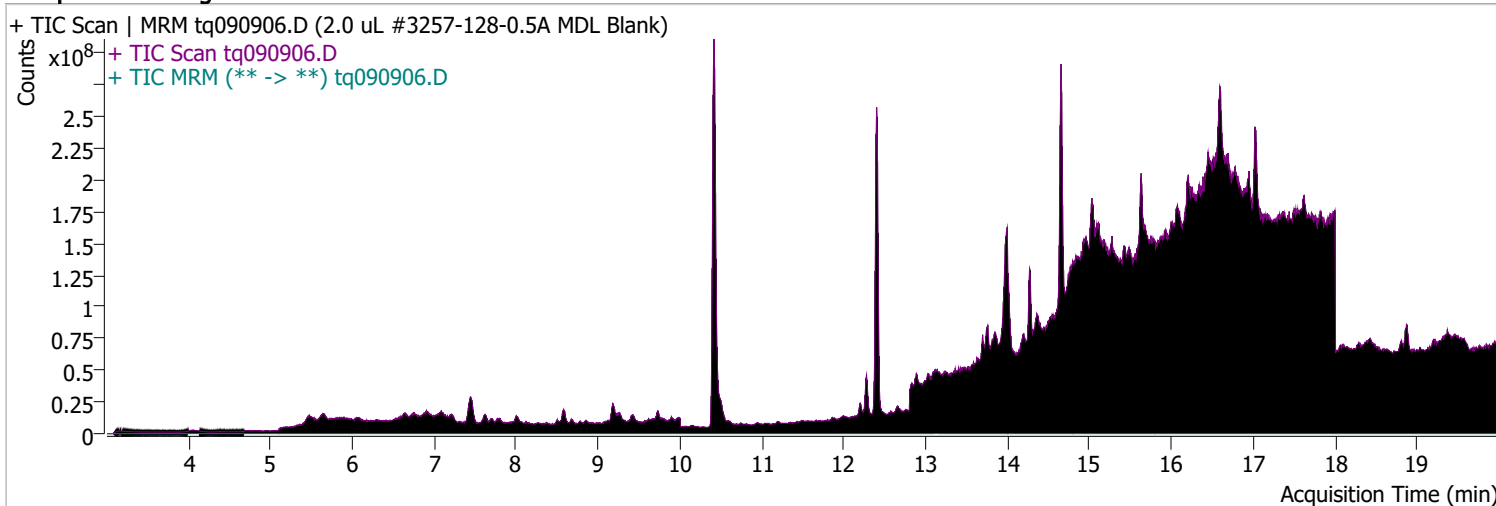
12:2 FTOH



Quantitative Analysis Sample Report

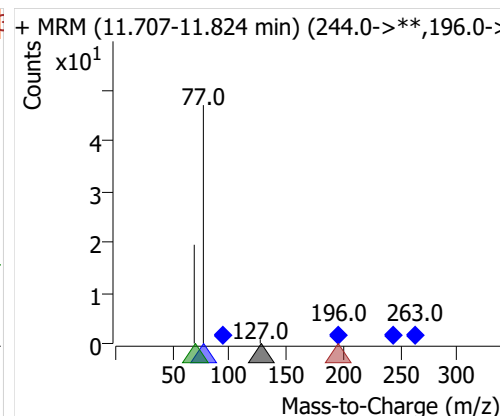
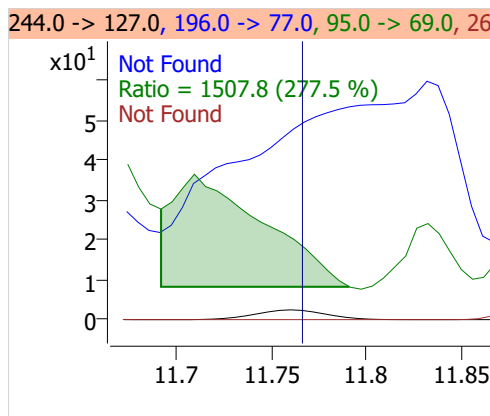
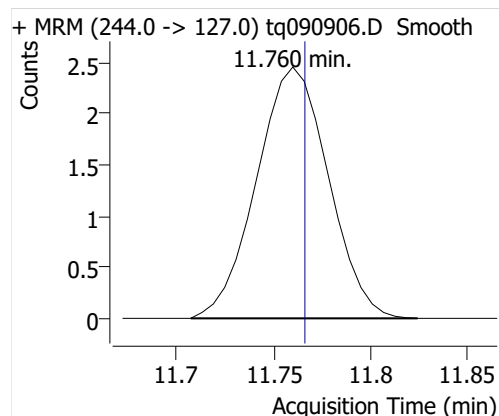
Batch Path	D:\MassHunter\GCMS\1\data\01sep22\QuantResults\mdlblk.batch.bin		
Analysis Time	9/22/2022 7:17 AM	Analyst Name	DESKTOP-R0LAL7E\analyst
Report Time	9/22/2022 7:24:16 AM	Reporter Name	DESKTOP-R0LAL7E\analyst
Last Calib Update	9/6/2022 9:10 AM	Batch State	Processed
Quant Batch Version	10.1	Quant Report Version	10.1
Acq. Time	9/9/2022 2:06 PM	Data File	tq090906.D
Sample Type	Sample	Sample Name	2.0 uL #3257-128-0.5A MDL Blank
Dilution	1	Acq. Method	tq22m0831

Sample Chromatogram

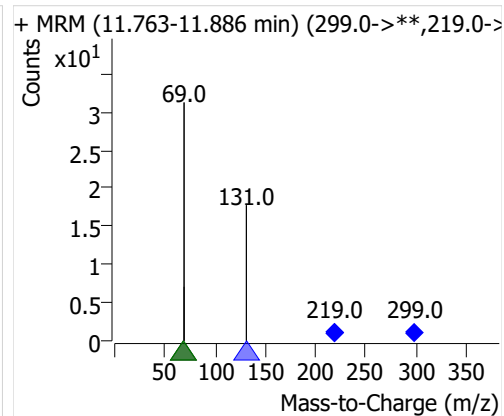
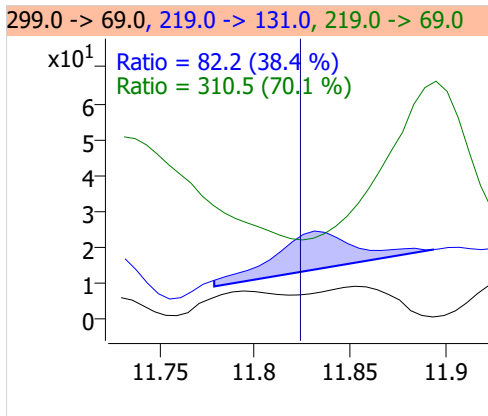
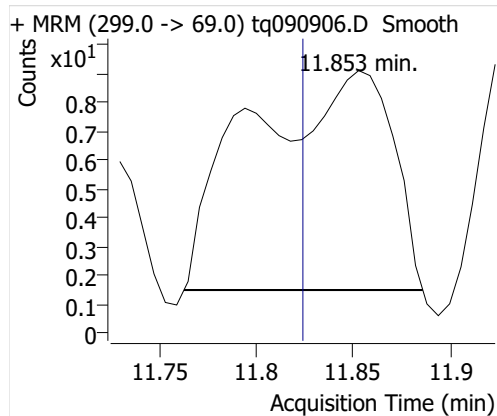


Compound	ISTD	RT	Resp.	ISTD Resp.	Resp. Ratio	Final Conc	Units
4:2 FTOH	6:2 FTOH-C13	11.760	6	27582	0.0002	0.0006	ng
5:2sFTOH	6:2 FTOH-C13	11.853	39	27582	0.0014	0.0079	ng
7:2sFTOH	6:2 FTOH-C13	13.183	27	27582	0.0010	0.0026	ng
6:2 FTOH	6:2 FTOH-C13	13.153	270	27582	0.0098	0.0127	ng
8:2 FTOH-C13	6:2 FTOH-C13	14.366	8035	27582	0.2913	0.9427	ng
8:2 FTOH	6:2 FTOH-C13			27582		ND	ng
10:2 FTOH	6:2 FTOH-C13			27582		ND	ng
12:2 FTOH	6:2 FTOH-C13			27582		ND	ng

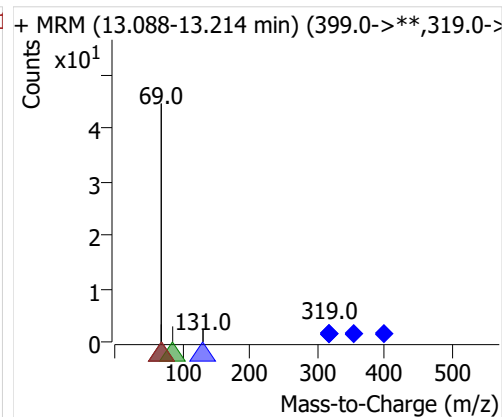
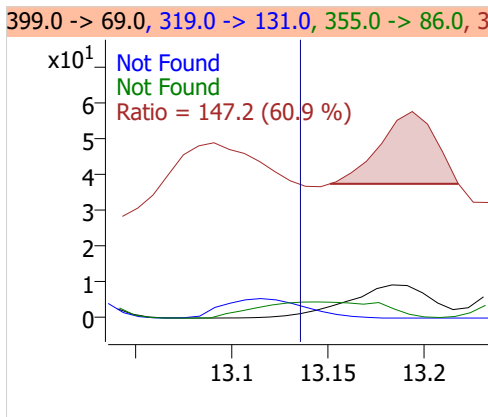
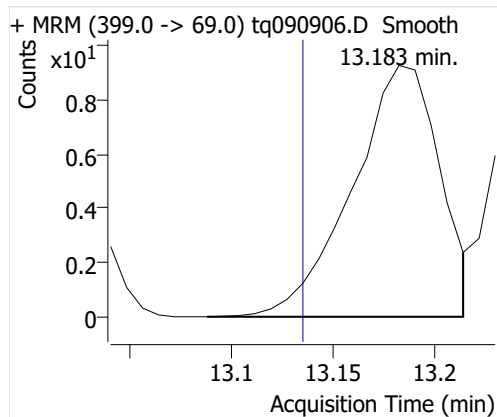
4:2 FTOH



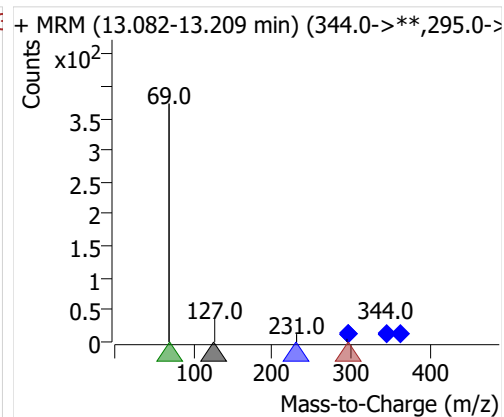
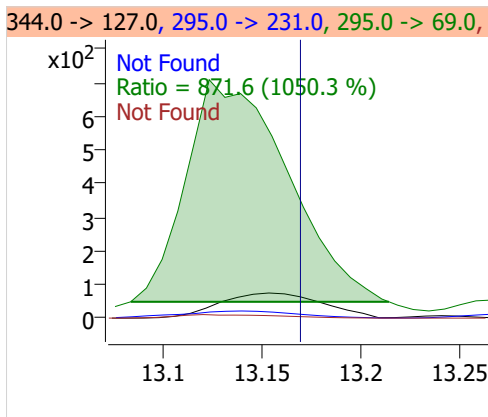
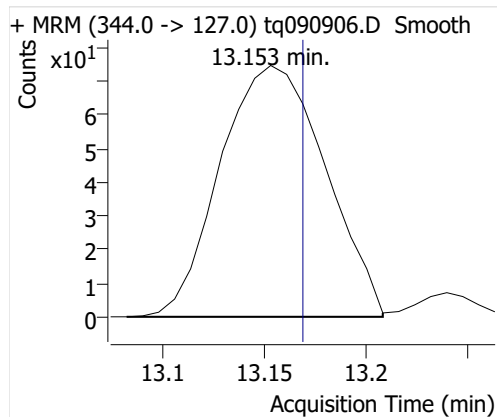
5:2sFTOH



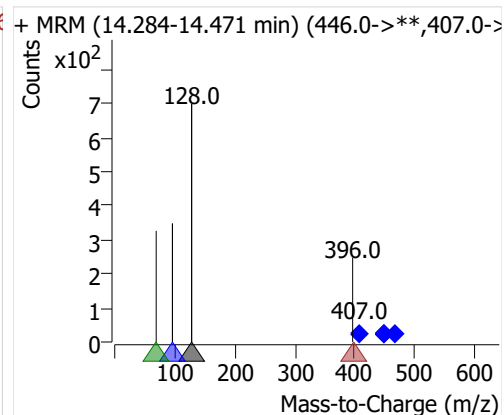
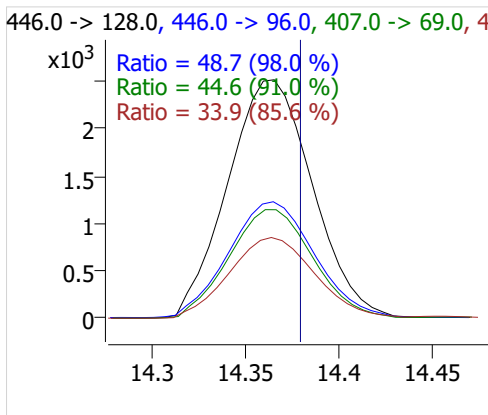
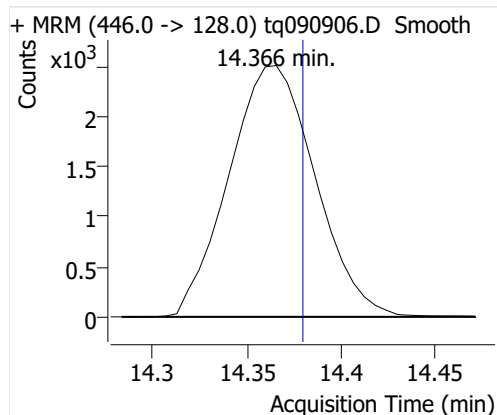
7:2sFTOH



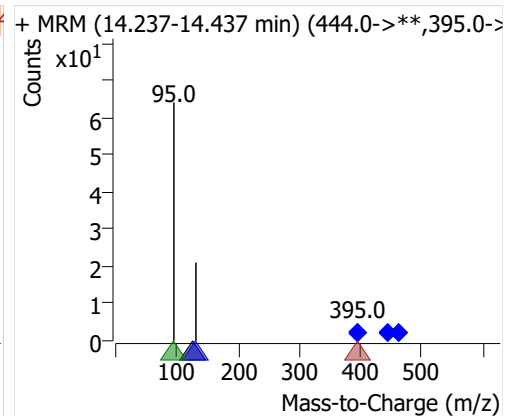
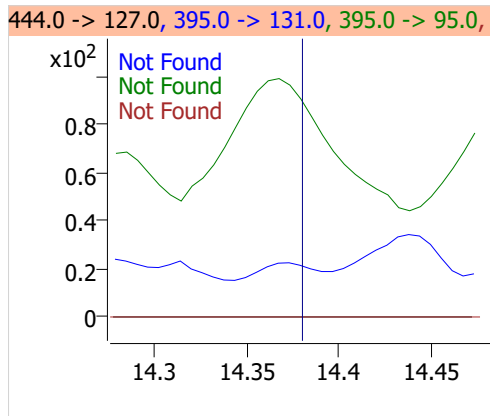
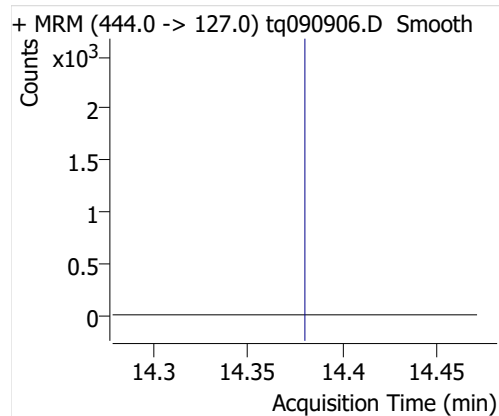
6:2 FTOH



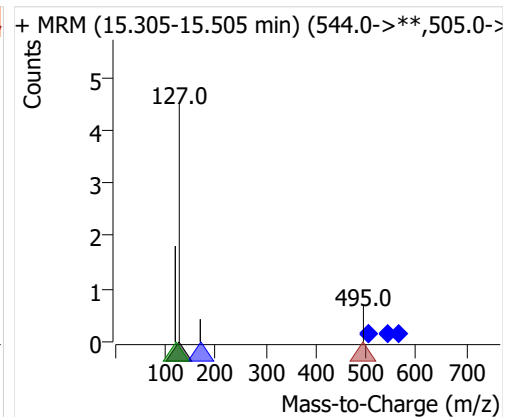
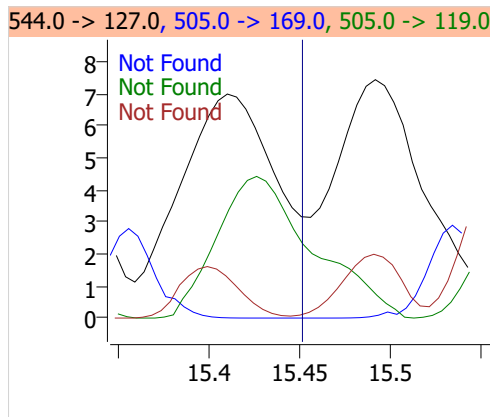
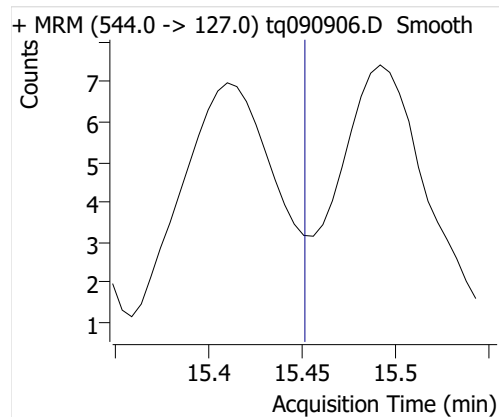
8:2 FTOH-C13



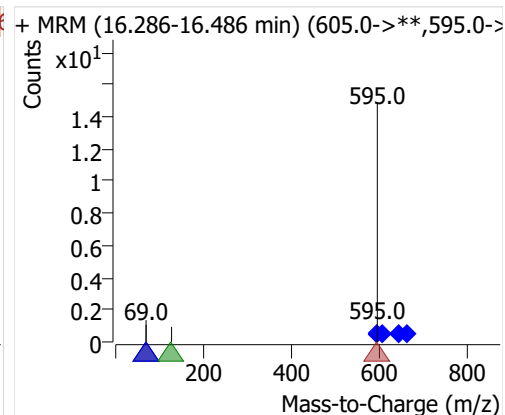
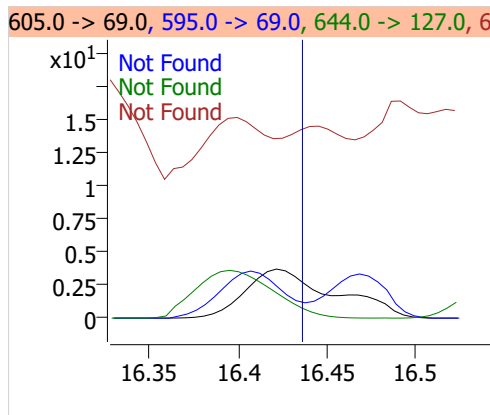
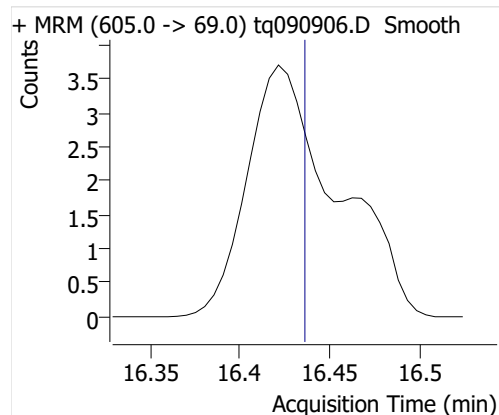
8:2 FTOH



10:2 FTOH



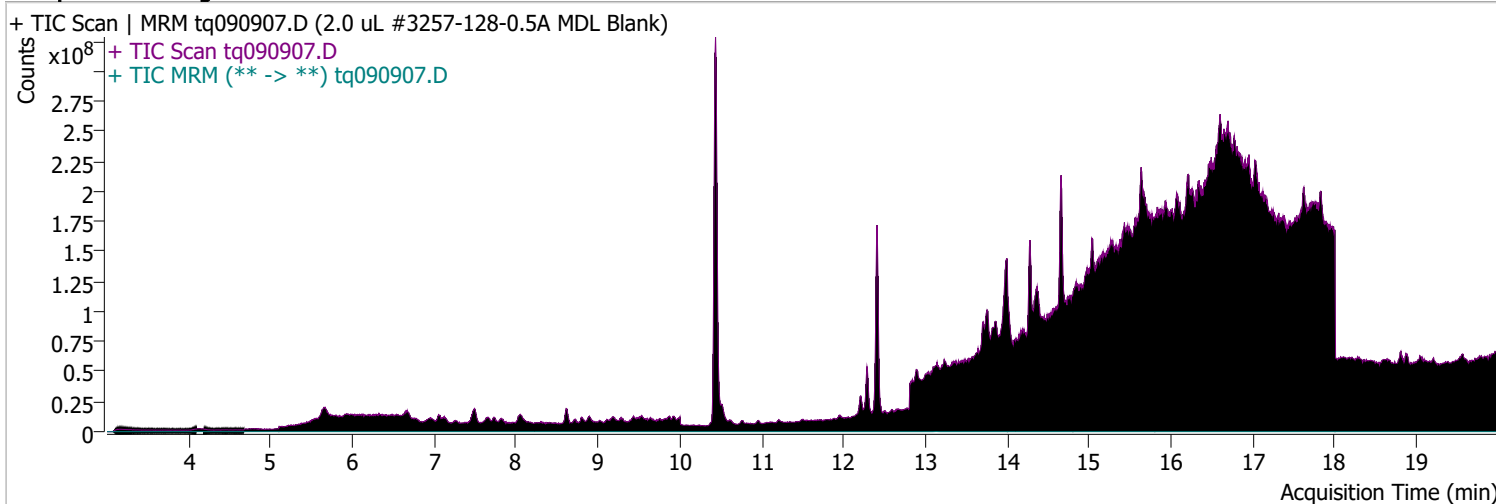
12:2 FTOH



Quantitative Analysis Sample Report

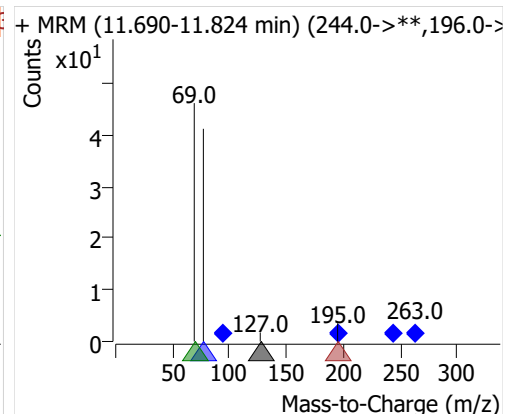
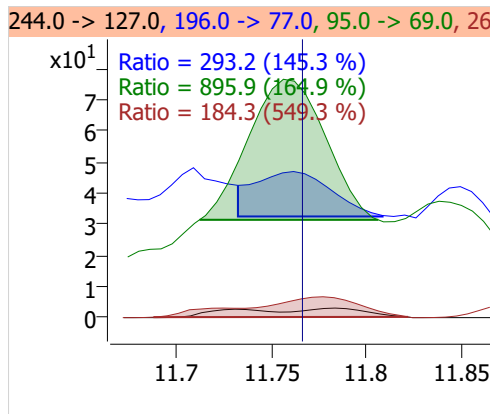
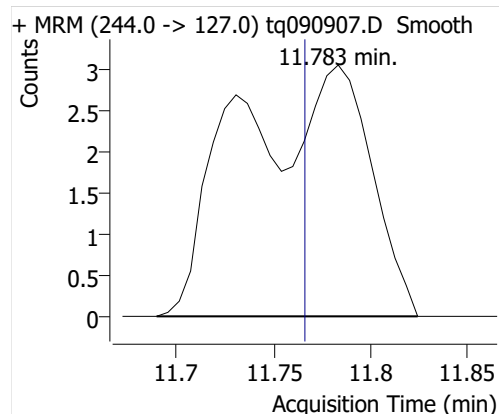
Batch Path	D:\MassHunter\GCMS\1\data\01sep22\QuantResults\mdlblk.batch.bin		
Analysis Time	9/22/2022 7:17 AM	Analyst Name	DESKTOP-R0LAL7E\analyst
Report Time	9/22/2022 7:24:16 AM	Reporter Name	DESKTOP-R0LAL7E\analyst
Last Calib Update	9/6/2022 9:10 AM	Batch State	Processed
Quant Batch Version	10.1	Quant Report Version	10.1
Acq. Time	9/9/2022 2:47 PM	Data File	tq090907.D
Sample Type	Sample	Sample Name	2.0 uL #3257-128-0.5A MDL Blank
Dilution	1	Acq. Method	tq22m0831

Sample Chromatogram

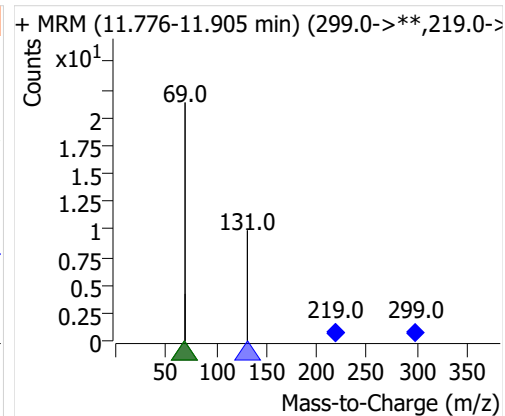
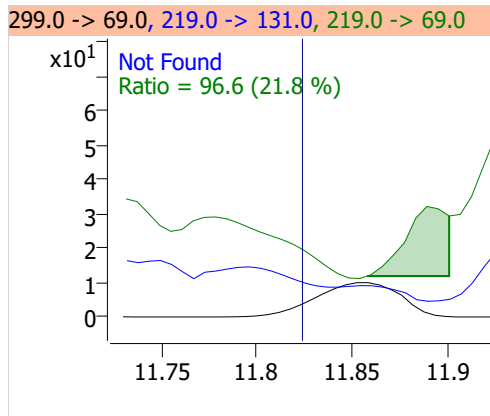
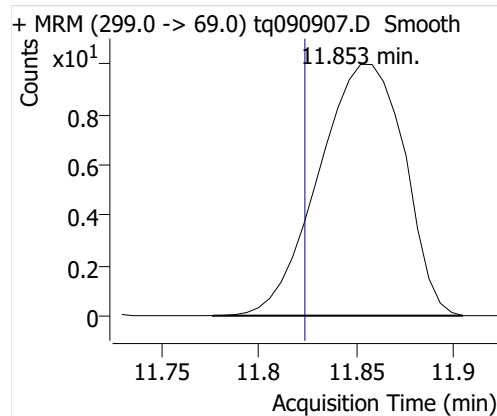


Compound	ISTD	RT	Resp.	ISTD Resp.	Resp. Ratio	Final Conc	Units
4:2 FTOH	6:2 FTOH-C13	11.783	14	25723	0.0006	0.0013	ng
5:2sFTOH	6:2 FTOH-C13	11.853	31	25723	0.0012	0.0068	ng
7:2sFTOH	6:2 FTOH-C13			25723		ND	ng
6:2 FTOH	6:2 FTOH-C13	13.153	109	25723	0.0043	0.0055	ng
8:2 FTOH-C13	6:2 FTOH-C13	14.365	8167	25723	0.3175	1.0275	ng
8:2 FTOH	6:2 FTOH-C13	14.360	40	25723	0.0016	0.0069	ng
10:2 FTOH	6:2 FTOH-C13			25723		ND	ng
12:2 FTOH	6:2 FTOH-C13			25723		ND	ng

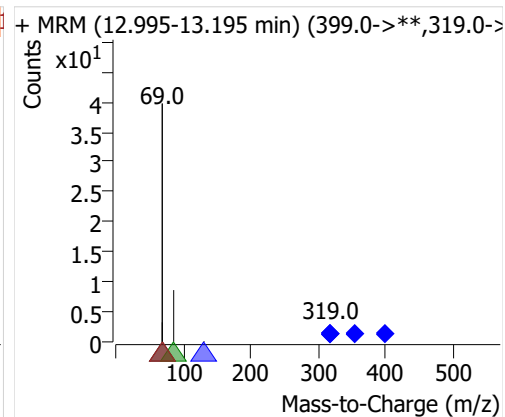
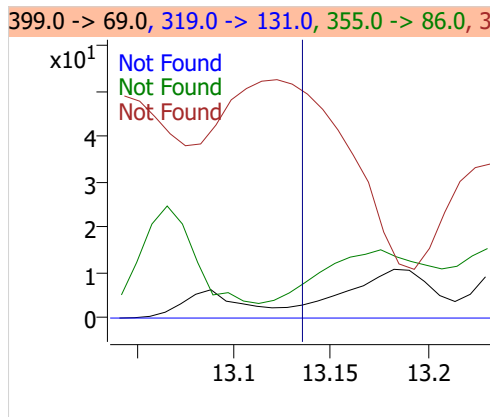
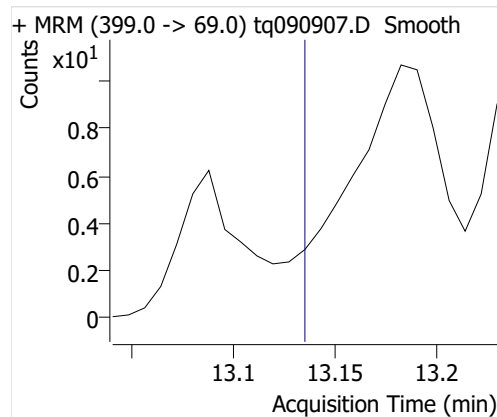
4:2 FTOH



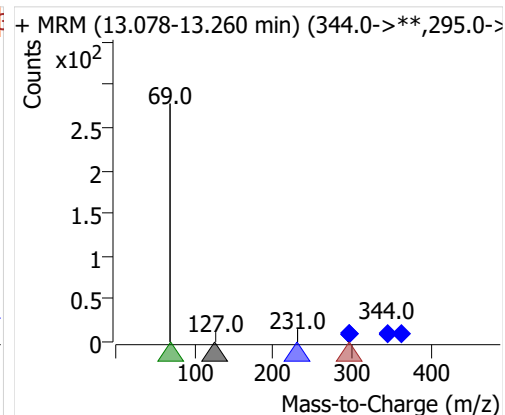
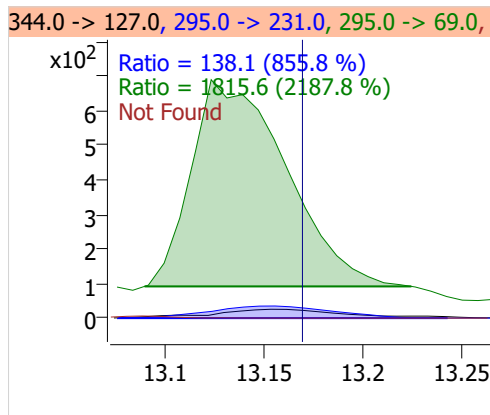
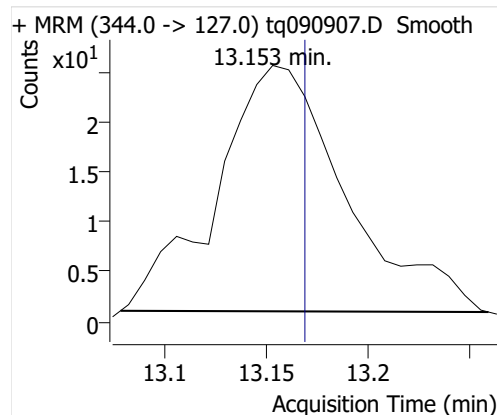
5:2sFTOH



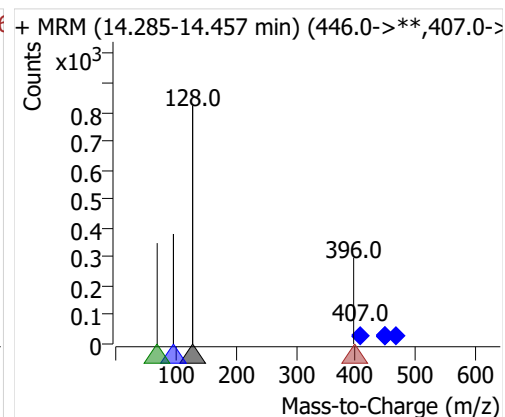
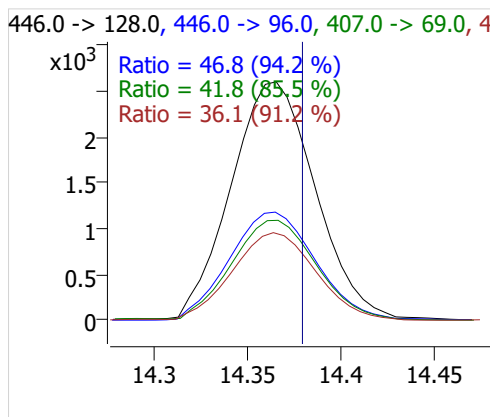
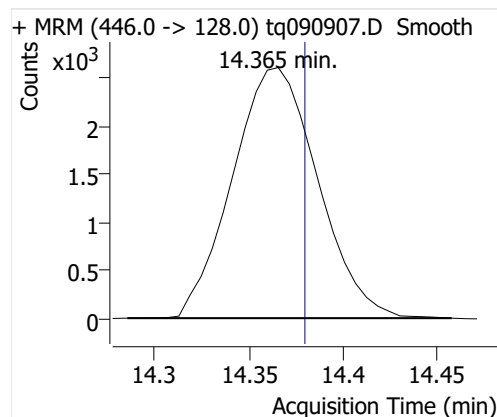
7:2sFTOH



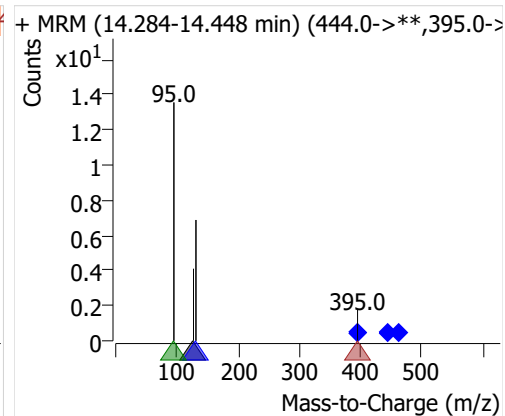
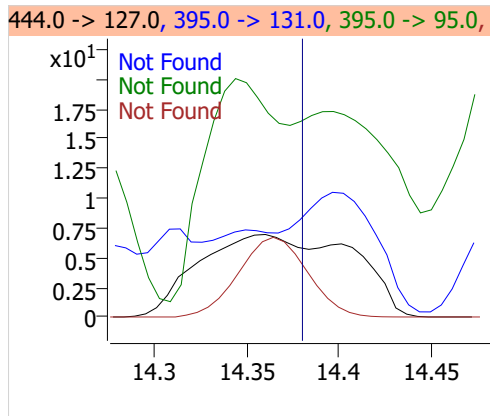
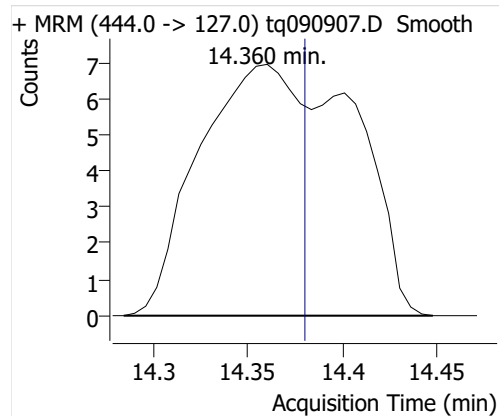
6:2 FTOH



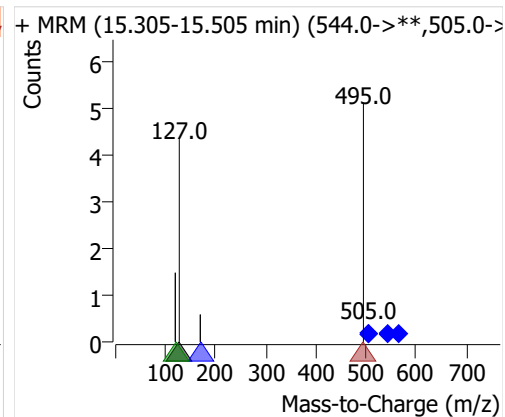
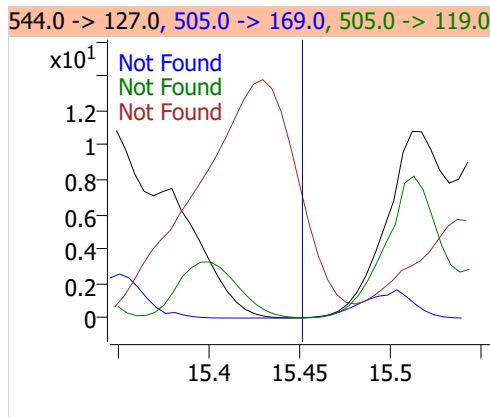
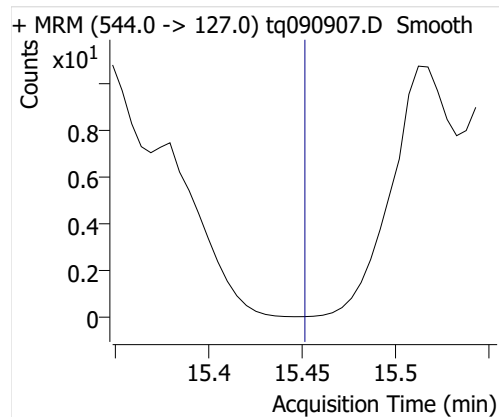
8:2 FTOH-C13



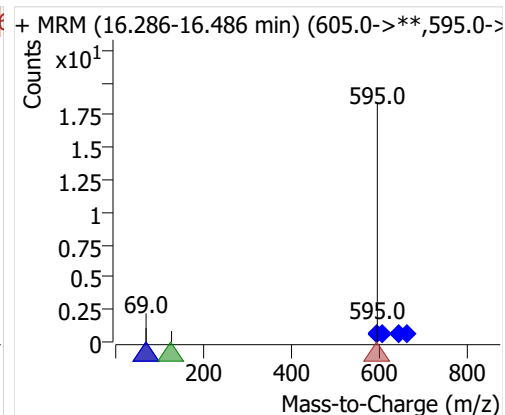
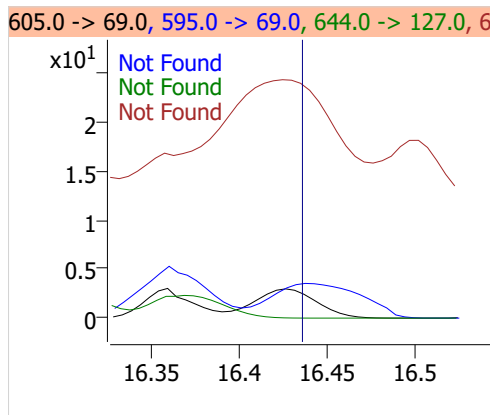
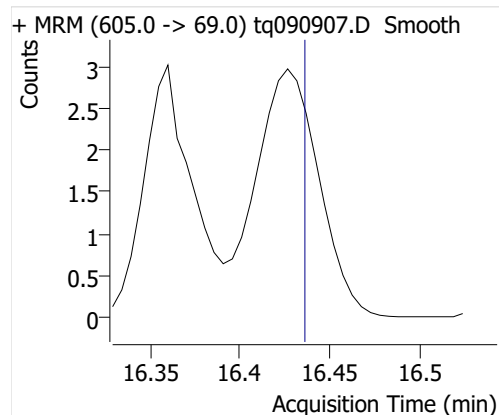
8:2 FTOH



10:2 FTOH



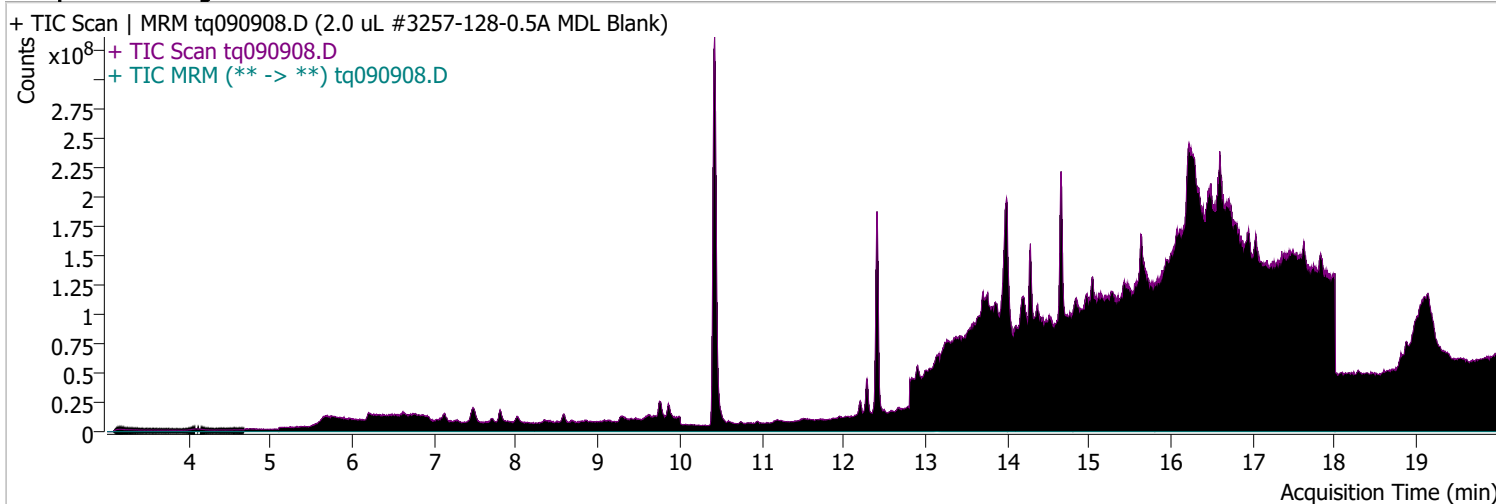
12:2 FTOH



Quantitative Analysis Sample Report

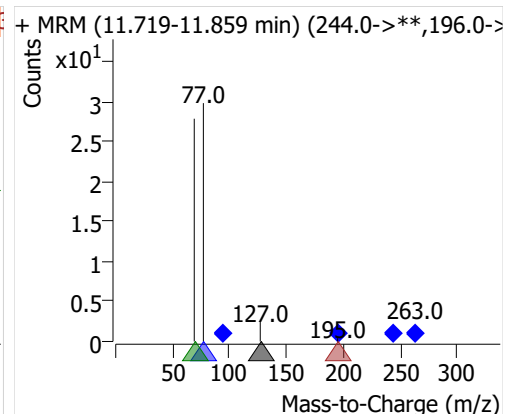
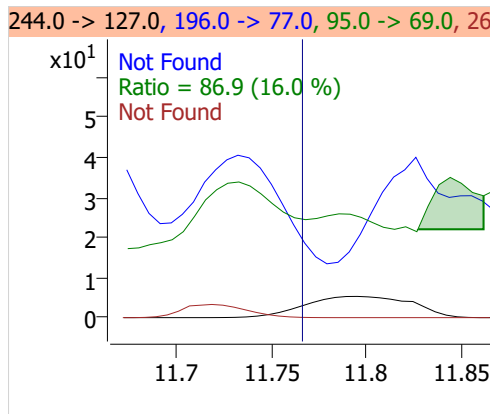
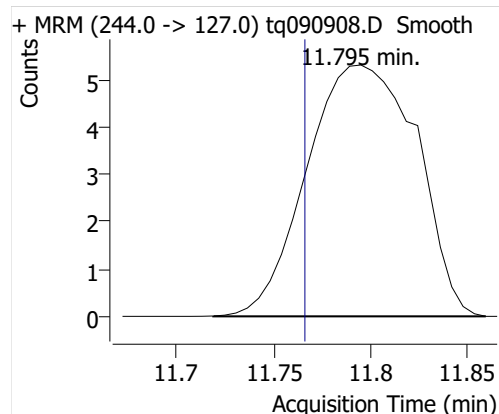
Batch Path	D:\MassHunter\GCMS\1\data\01sep22\QuantResults\mdlblk.batch.bin		
Analysis Time	9/22/2022 7:17 AM	Analyst Name	DESKTOP-R0LAL7E\analyst
Report Time	9/22/2022 7:24:17 AM	Reporter Name	DESKTOP-R0LAL7E\analyst
Last Calib Update	9/6/2022 9:10 AM	Batch State	Processed
Quant Batch Version	10.1	Quant Report Version	10.1
Acq. Time	9/9/2022 3:28 PM	Data File	tq090908.D
Sample Type	Sample	Sample Name	2.0 uL #3257-128-0.5A MDL Blank
Dilution	1	Acq. Method	tq22m0831

Sample Chromatogram

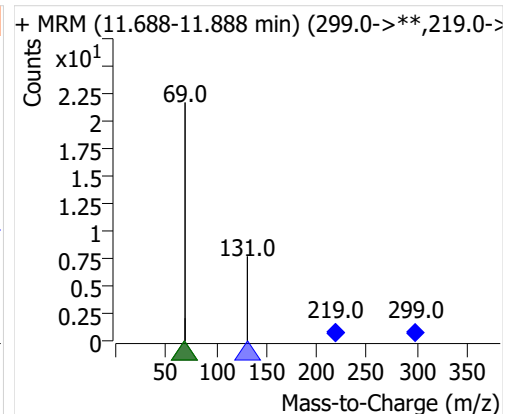
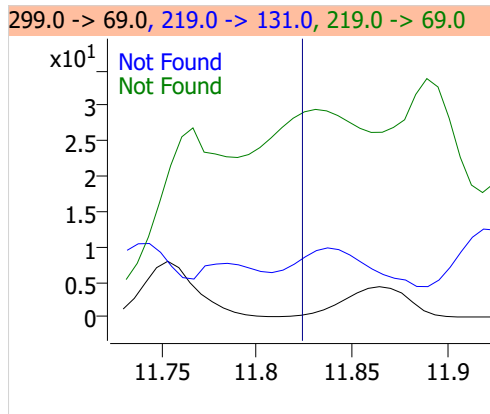
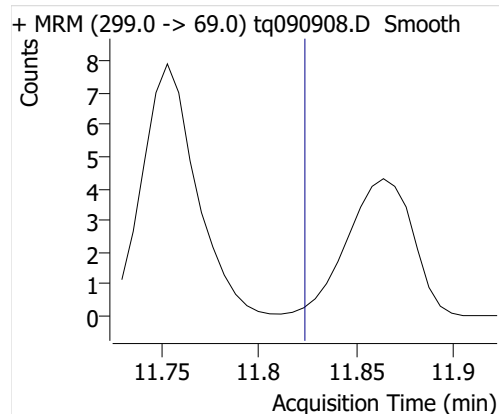


Compound	ISTD	RT	Resp.	ISTD Resp.	Resp. Ratio	Final Conc	Units
4:2 FTOH	6:2 FTOH-C13	11.795	21	23661	0.0009	0.0021	ng
5:2sFTOH	6:2 FTOH-C13			23661		ND	ng
7:2sFTOH	6:2 FTOH-C13			23661		ND	ng
6:2 FTOH	6:2 FTOH-C13	13.161	228	23661	0.0096	0.0125	ng
8:2 FTOH-C13	6:2 FTOH-C13	14.365	7471	23661	0.3158	1.0218	ng
8:2 FTOH	6:2 FTOH-C13	14.366	40	23661	0.0017	0.0074	ng
10:2 FTOH	6:2 FTOH-C13			23661		ND	ng
12:2 FTOH	6:2 FTOH-C13			23661		ND	ng

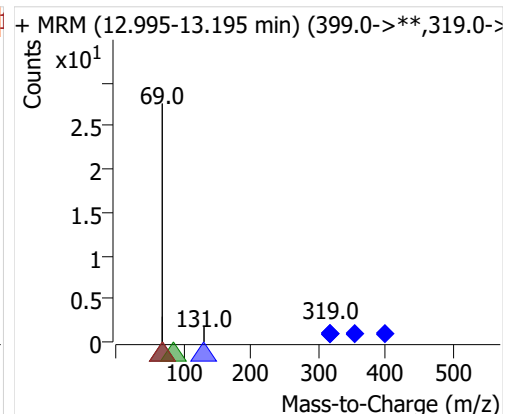
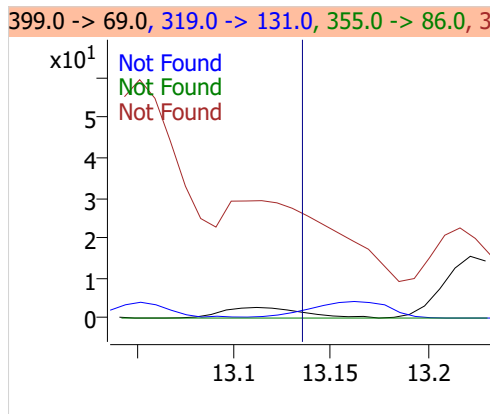
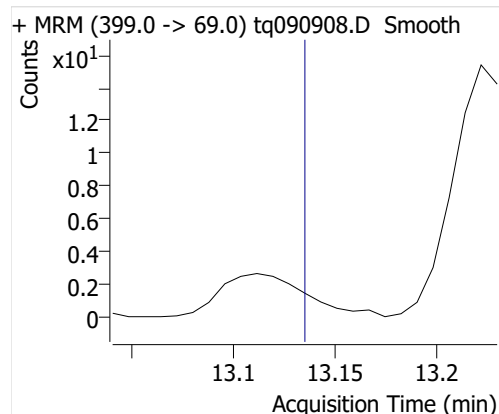
4:2 FTOH



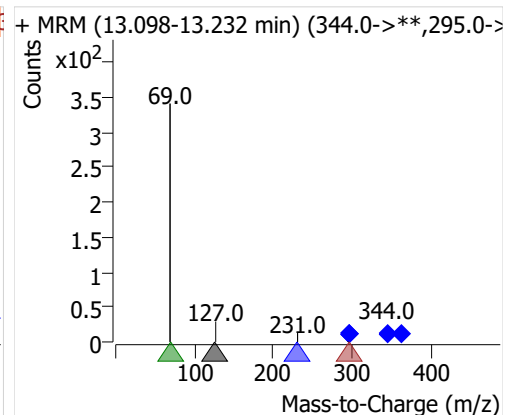
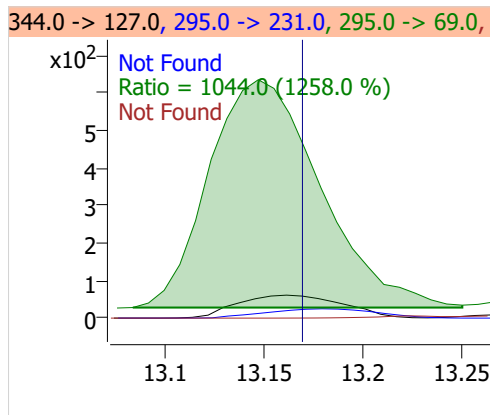
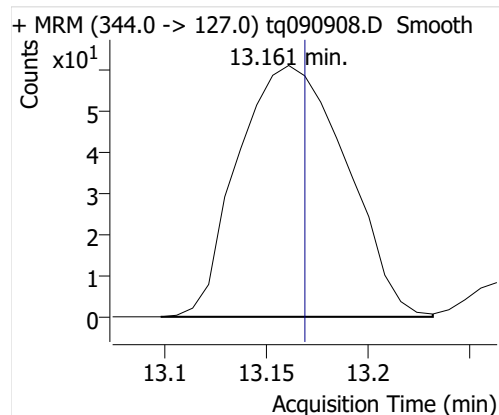
5:2sFTOH



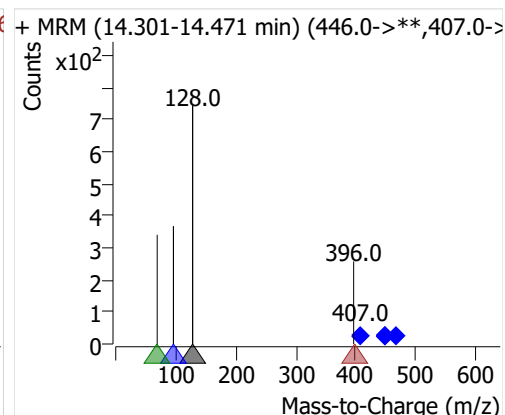
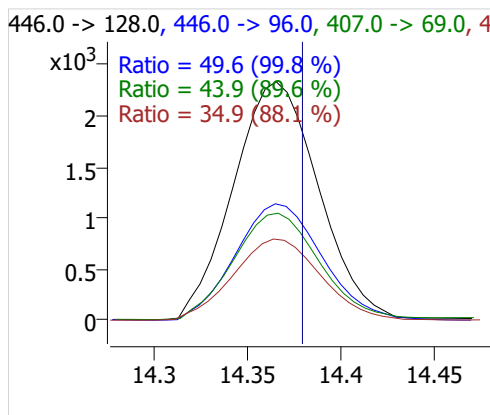
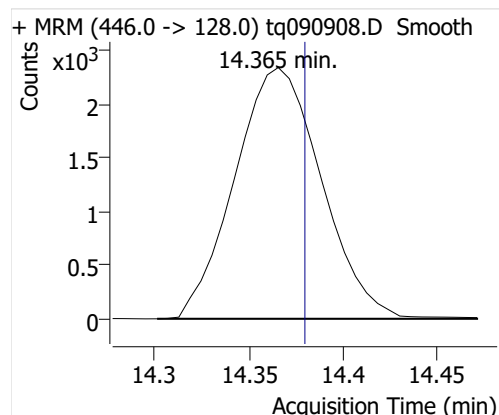
7:2sFTOH



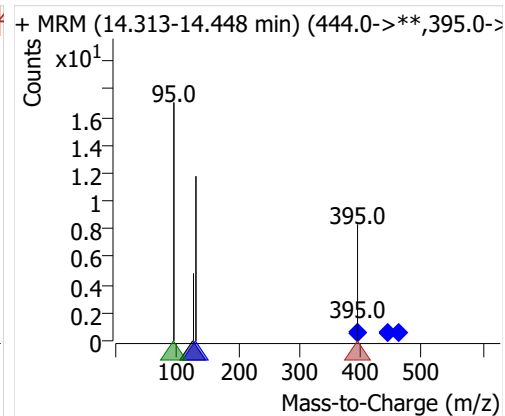
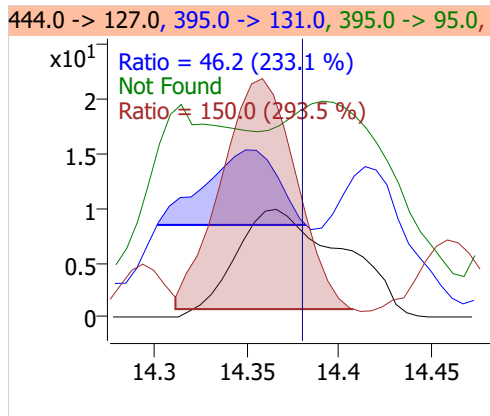
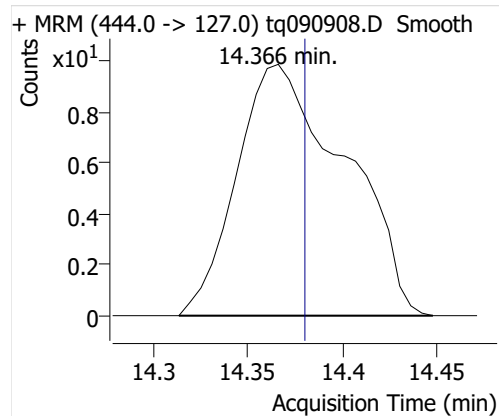
6:2 FTOH



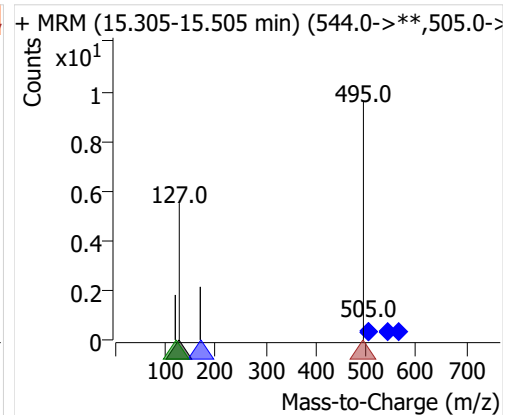
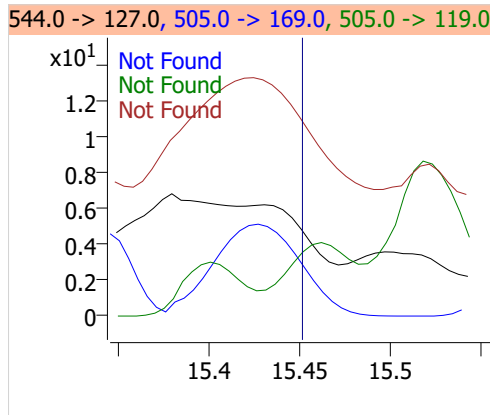
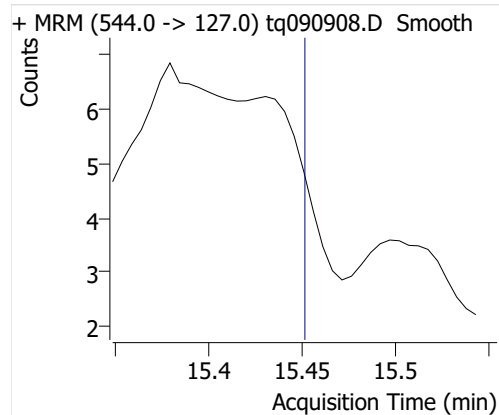
8:2 FTOH-C13



8:2 FTOH



10:2 FTOH



12:2 FTOH

